

2008 Michigan Inland Trout & Salmon Guide

Rules apply from April 1, 2008 through March 31, 2009



Great Lakes, Great Times, Great Outdoors



Visit us on the Web at:
www.michigan.gov/dnr



LIKE NO OTHER RETAIL STORE
ON EARTH.™



With more than 200,000 outdoor products in our store, you're sure to find exactly what you need to turn your next hunting trip into a success. You'll find only the best in quality products to make your time outdoors more productive.



Shop your way
ANYTIME, ANYWHERE

CATALOG - Call 800.747.0148 for a FREE Catalog

INTERNET - Visit cabelas.com

RETAIL - Call 800.581.4420 for store information

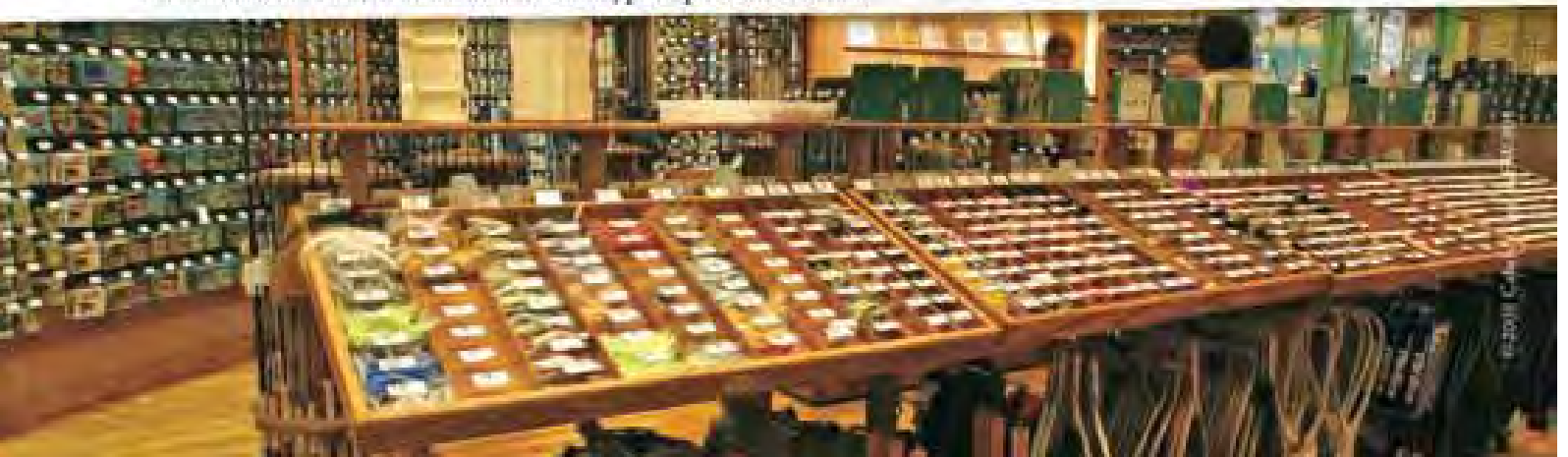
IN-STORE PICK-UP *Now Available!*

Call 800.237.4444 or visit www.cabelas.com/pickup for more details

Cabela's

WORLD'S FOREMOST OUTFITTER®

Hunting • Fishing • Outdoor Gear

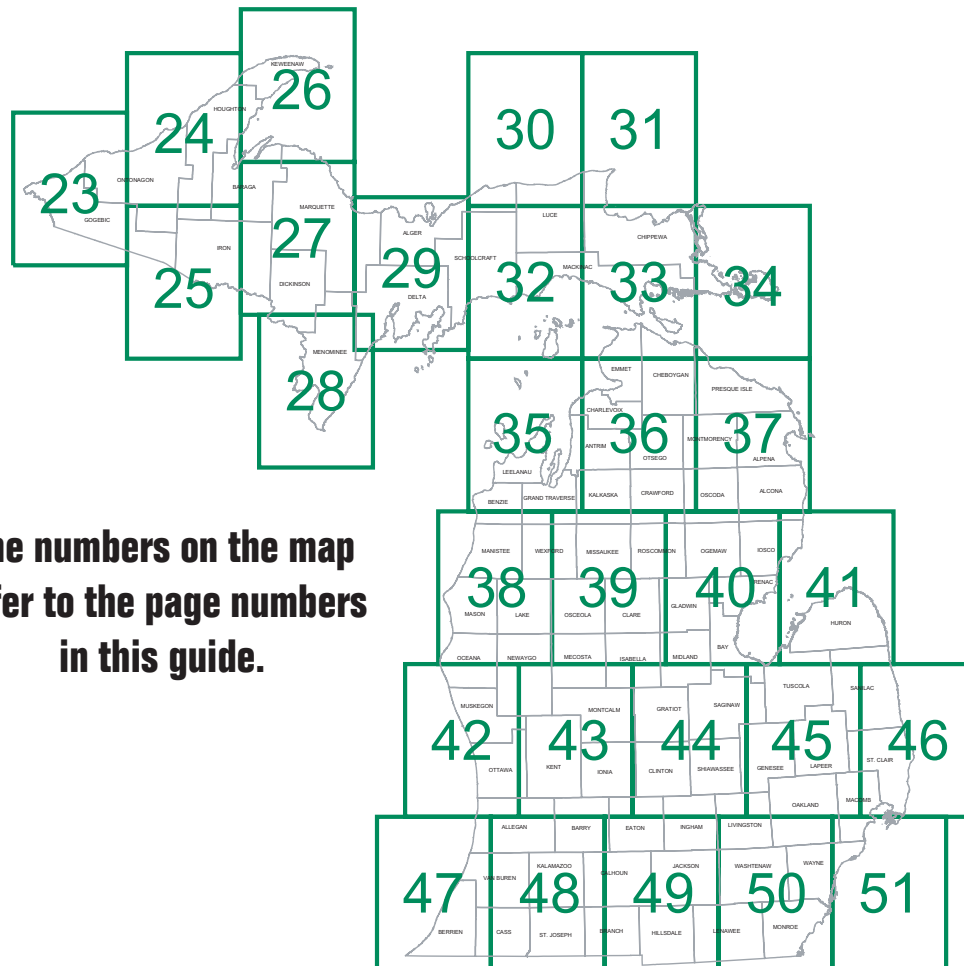


About This Guide

The information in this guide provides fishing regulations that pertain only to the taking of trout and salmon from inland waters and is not a complete collection of fishing regulations and laws. Fishing regulations for other species taken from inland waters, and for trout and salmon taken from the Great Lakes, can be found in the Michigan Fishing Guide. Copies of fisheries orders can be found online at www.michigan.gov/dnr.

Maps

Included in this guide is a section containing color-coded maps (pages 23-51). The maps were developed to assist anglers in locating waters that contain trout/salmon and the regulations that pertain to those lakes/streams. **The maps are to be used as a general reference only.** For exact boundaries of regulations on stream types 2-7, please refer to the text portion of this guide.



New Statewide Viral Hemorrhagic Septicemia (VHS) Regulations

Viral Hemorrhagic Septicemia is a virus that affects fish and has been found in several Michigan water bodies. New regulations are in effect to reduce the spread of this pathogen. For more information regarding VHS and the new regulations, visit the DNR Web site at www.michigan.gov/dnrfishing.

REPORT ALL POACHING Call: 800-292-7800

The Michigan Department of Natural Resources is committed to the conservation, protection, management, use and enjoyment of the State's natural resources for current and future generations.

The Natural Resources Commission is the governing body for the Michigan Department of Natural Resources. In providing a strategic framework for the DNR to effectively manage the state's resources, the NRC works closely with a broad cross-section of constituencies to establish and continuously improve natural resources management policy.

This guide and the 2008 Michigan Fishing Guide were printed at zero cost to the state of Michigan, which resulted in a savings of nearly \$200,000 to the Game and Fish Protection Fund.

All Species License

All-species fishing licenses are required for all anglers, age 17 or older, to take and possess trout and salmon from any public waters. This license also is required when fishing the following waters:

- All trout lakes designated by the DNR under FO-200 (All Type A, all Type D and designated Type B lakes as noted on pages 8-19).
- All Type 5, 6 and 7 streams designated by the DNR under FO-200.
- All waters of the Great Lakes when trout and/or salmon are the target species.
- All designated trout streams (FO-210) when trout and/or salmon are the target species.

Fishing License Requirements:

- When fishing, you must carry your license and the identification used to purchase that license and exhibit both upon demand of a Michigan Conservation Officer, a Tribal Conservation Officer or any law enforcement officer.
- Your fishing license is valid from March 1 of a given year through March 31 of the following year.

Native American Fishing on Inland Waters

In 2007, the U.S. District Court for the Western District of Michigan entered a Consent Decree on tribal fishing rights in the 1836 Treaty area of Michigan. The parties to the Consent Decree were the state of Michigan, the United States and the following tribes in the 1836 Treaty area: the Bay Mills Indian Community, the Sault Ste. Marie Tribe of Chippewa Indians, the Little Traverse Bay Band of Odawa Indians, the Grand Traverse Band of Ottawa and Chippewa Indians, and the Little River Band of Ottawa Indians. The area affected by the agreement is the portion of Michigan within the 1836 Treaty boundary, which includes roughly the eastern half of the Upper Peninsula and a large area in the northern third of the Lower Peninsula. The Consent Decree recognizes a treaty-reserved right for the tribes' members to engage in hunting, fishing and gathering activities within the treaty area and for the tribes to regulate those activities.

Under an approved and monitored permit system, tribal members may use spears and may place impoundment nets on public waters. If you encounter these activities, do not disrupt the fishers or interfere with their nets. In the 1836 Treaty area, the DNR and the tribes will coordinate their efforts in research and assessment activities and consult and exchange information. Under the decree, the tribes will have seasons and bag limits that differ somewhat from state regulations. However, tribal fishing efforts should have limited effect on the resources, especially in view of the small number of tribal fishers relative to the large number of non-tribal fishers.

For more information or to view a copy of the 2007 Inland Consent Decree, visit the DNR Web site at www.michigan.gov/dnr.

Description of Inland Waters

Inland waters are all waters within the jurisdiction of the state except the Great Lakes, and the bays and connecting waters. The connecting waters between Lake Superior

and Lake Huron include that portion of the St. Marys River located within this state. The connecting waters of Lake Huron and Lake Erie include the St. Clair River, Lake St. Clair and the Detroit River (beginning at the imaginary line extending due south of the Windmill Point Light, Wayne County and ending at the imaginary east-west line drawn through the most southerly point of Celeron Island). Inland waters also include all inland lakes, streams and tributaries to the Great Lakes.

Common Terms

Artificial Fly means any commonly accepted single hook wet and dry flies, streamers, and nymphs without spinner, spoon, scoop, lip or any other fishing lure or bait attached. The fly or leader may be weighted but no weight shall be attached to the fly or to the terminal tackle in a manner that allows the weight to be suspended from or below the hook.

Artificial Lure means a manmade lure manufactured to imitate natural bait. Artificial lures include spoons, spinners and plugs made of metal, plastic, wood and other non-edible materials. They also include plastic products made to resemble worms, eggs, fish and other aquatic organisms.

Catch and Immediate Release means fish caught must be returned immediately to the water without injury and may not be possessed.

Daily Limit means the total number of fish, amphibians or reptiles that you are permitted to catch and keep in one day. Also see Possession Limit.

Designated Trout Lake means any lake so designated by the state in which trout are the predominant game fish. All Type A, all Type D and certain Type B lakes are considered designated trout lakes. FO-200 lists all designated trout lakes and is available upon request, or can be found online at www.michigan.gov/dnr. You must have an all-species license to fish these waters.

Designated Trout Stream means any stream so designated by the state that contains a significant population of trout or salmon. FO-210 lists all designated trout streams and is available upon request, or can be found online at www.michigan.gov/dnr. You must have an all-species license to fish these waters.

Open Season means the period of time during which it is legal to fish for a given species.

Possession Limit is equal to the Daily Limit. Except a person may possess up to two (2) additional limits of coho, chinook, or pink salmon taken during previous fishing days **provided** that the additional limits are processed fish (canned, cured by smoking or drying, or frozen). Anglers who have not attained the age of 17 are entitled to the possession limit even though they do not have a fishing license. A person fishing waters bordered by other states or provinces AND possessing multiple fishing licenses may possess the limit allowed for **ONLY ONE** license while in transit, but while fishing in Michigan waters, must comply with Michigan possession and size limits.

Possession Season is that portion of the open season during which it is legal to harvest fish.

Outdoor World

YOUR ADVENTURE STARTS HERE.

Bass Pro Shops® Outdoor World® is not only Michigan's most spectacular outdoor store—it's MUCH more!

Our lodge-style architecture—complete with waterfalls, rustic wildlife displays and huge aquariums stocked with trophy fish—offers a breathtaking backdrop to Michigan's biggest selection of fishing, hunting, camping and boating gear.

Check out our wide array of quality outdoor clothing for the whole family.

Browse through the expansive TRACKER® Boat Center Showroom. Got questions? Our friendly, knowledgeable associates are always ready to assist you.

So bring the entire family and plan on spending the day. It'll be an outdoor adventure you'll never forget!

Great Lakes Crossing
4500 Baldwin Road Auburn Hills, MI (248) 209-4200
Hours: Mon-Sat 9am-10pm, Sun 9am-7pm
TRACKER BOAT CENTER: (248) 209-4180

TRACKER BOAT CENTER



Shop online at
basspro.com

For a FREE catalog
1-800-BASS PRO

For an adventure in itself
Visit Our Stores Nationwide

Gear Restrictions

On all streams (including tributaries to the Great Lakes) from August 1 through May 31, it shall be unlawful to use multi-pointed hooks exceeding 3/8 inch between point and shank and/or single-pointed hooks exceeding 1/2 inch between point and shank. Also during this period it shall be unlawful to use lures exceeding one ounce. The Detroit River, St. Clair River and St. Marys River are exempt from these restrictions.

Angler Rights On Public Streams

On fenced or posted property or farm property, a fisherman wading or floating a navigable public stream may, without written or oral consent, enter upon property within the clearly defined banks of the stream or, without damaging farm products, walk a route as closely proximate to the clearly defined bank as possible when necessary to avoid a natural or artificial hazard or obstruction, including, but not limited to, a dam, deep hole, or a fence or other exercise of ownership by the riparian owner.

Angler Harassment Information

Anglers in Michigan have the right to enjoy their sport free from unreasonable and deliberate interference. Michigan law prohibits individuals from obstructing or interfering with the lawful taking of aquatic species. Individuals whose fishing is being obstructed should promptly report the violation to the DNR by calling a local conservation officer, the nearest DNR office or toll free 800-292-7800 (RAP hotline).

Catch and Immediate Release Fishing

When practicing catch and release, please follow these suggestions to reduce the risk of injury to the fish.

- Land your catch carefully and quickly. If possible avoid handling the fish at all and remove the hook with pliers.
- Use a landing net made of soft or knotless mesh and always try to net your fish head first.
- Try to keep the fish in the water and gently cradle it while carefully removing the hook.
- Leave your fish in the water until you are ready to take a photo.
- Keep your fingers out of the fish's gills since a torn gill could cause the fish to bleed to death.
- Touch your fish as little as possible. Always wet your hands when touching your fish.
- Cut the line near the hook if a fish is deeply hooked. A steel hook will rust away leaving the fish unharmed.
- Release your fish, pointing it into a slow current or gently moving it back and forth until its gills are working properly and the fish regains its balance. Once fully recovered, allow the fish to swim from your hands (big fish may take longer to recover).

Michigan - Wisconsin Boundary Waters

Please see the Michigan Fishing Guide for fishing regulations on inland waters that form a common boundary between the states of Michigan and Wisconsin.

Isle Royale

Contact Isle Royale National Park Visitor Center for fishing regulations on inland waters (906-482-0984).

Sylvania Wilderness Area (Gogebic County)

Any angler fishing the waters contained in the Sylvania Wilderness Area, Gogebic County, should refer to the regulations listed in the Michigan Fishing Guide.

Fishing and Harvest Closures (Spawning Closures)

Michigan, like many states, prohibits fishing for various species at certain times of the year. These seasonal closures generally coincide with spawning periods and are often referred to as spawning closures. Many anglers and managers tend to think of these regulations as providing specific protection to spawning fish, and the timing and length of closed seasons are generally related to the timing and duration of spawning seasons. These closures are indicated by lake or stream in the county listings. Lakes and streams are closed to all fishing during the period listed. Outside of the closure period, the respective Type regulations apply.

Fish Consumption Advisory

The Michigan Department of Community Health (MDCH) advises women of childbearing age and children under 15 to use caution when eating certain kinds and sizes of fish from the Great Lakes and from some inland lakes and streams. Fish in these waters contain levels of toxic chemicals that may be harmful if those fish are eaten too often. The Michigan Fish Advisory, compiled by MDCH, shows you which fish are okay to eat and how often they can be eaten. The advisory is available online at www.michigan.gov/mdch or by contacting MDCH, Lewis Cass Building, 320 South Walnut Street, Lansing, MI 48913; phone (517) 373-3740 or TTY (517) 373-3573.

Keep our Waters Great!

Don't dump your bait!!

Fish diseases like Viral Hemorrhagic Septicemia (VHS) can be transferred in your bait bucket! It's the law!

- Dispose of unused bait on the land or in the trash
- Empty livewells and bilges at the ramp
- Don't transfer live fish to waterbodies other than where they were caught!

Help prevent disease transfer-

- Disinfect livewells and bilges with bleach solution (1/2 cup bleach to 5 gallons of water)
- Allow equipment to dry thoroughly before using in a different body of water

www.michigan.gov/dnr/fisheries



www.sportsmanswarehouse.com



Welcome to "The Great Indoors for those who love the Great Outdoors."SM

Allen Park

3223 Fairlane Drive • (313) 382-9800

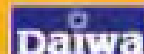
SHIMANO



PENN



BLUE FOX



County listing of lakes and streams

Below is a listing of the inland lakes and streams that are managed for trout and salmon, along with their respective type of regulation. For inland lakes, the lake name will appear under the appropriate county and will be followed by a letter (A-F). The letter designates the Type of regulations that apply to that lake. For streams, the stream name will be followed by a number (2-7) and any upstream/downstream boundaries that apply to that section of stream. **Type 1 streams are not listed in the text, but they do appear in green on the maps.** For a complete listing of all trout streams, refer to FO-210 (available online or at all DNR Fisheries Offices). **Please see pages 21-22 for a description of each Type of regulation.** An **SC** indicates a fishing closure for the area and period mentioned. This guide can also be found online at www.michigan.gov/dnr.

Alcona		
Lakes	Type	
O'Brien Lake,	A	Indian River, 2 from "Wide Waters" (T44N, R19W, S13) downstream to Indian Lake.
Reid Lake, (Designated Trout Lake)	B	Laughing Whitefish River, 4 from Forks (T47N, R22W, S22) downstream to Lake Superior.
S. Hoist Lake,	B	Miner's River, 4 from Miner's Falls downstream to Lake Superior.
Streams		Mosquito River, Research Area: from the last Saturday in April-July 31, Type 1 stream regulations apply EXCEPT brook trout regulations are as follows: 18" minimum size limit, daily harvest/possession is (1) fish. From August 1-Friday before the last Saturday in April, Type 1 regulations apply EXCEPT no harvest of brook trout is allowed during this period. These regulations apply to that portion of the Mosquito River from The Falls (T48N, R17W, S31) down to Lake Superior.
AuSable River Mainstream, from McKinley Bridge downstream to 4001 Bridge.	2	
AuSable River Mainstream, from Alcona Dam to S. Branch River.	4	
Black River, from confluence with North Branch Black River downstream to Lake Huron.	4	
Pine River, from F-41 downstream to Lake Huron.	3	
Alger		
Lakes	Type	
Ackerman Lake,	B	Rock River, 4 from Railroad Bridge (T47N, R21W, S22) downstream to Lake Superior.
Addis Lakes,	A	SC- Closed to Fishing - April 1 - June 30 between dam and its downstream-most foot bridge located downstream from M-28 in T47N, R21W, S15.
Bette's Pond	A	
Brian's Pond	A	
Cheryl's Pond, (T44N, R19W, S25)	B	Sable Creek, 4
Cole Creek Pond, (T46N, R20W, S24)	A	Seven Mile Creek, Research Area: from the last Saturday in April-July 31, Type 1 stream regulations apply EXCEPT brook trout regulations are as follows: 18" minimum size limit, daily harvest/possession is (1) fish. From August 1-Friday before the last Saturday in April, Type 1 regulations apply EXCEPT no harvest of brook trout is allowed during this period. These regulations apply to that portion of Seven Mile Creek from the outflow of Seven Mile Lake (T48N, R16W, S11) down to Lake Superior.
Cox Pond,	A	
Grand Marais Lake,	A	
Grand Sable Lake,	E	
Hike Lake,	A	
Irwin Lake,	A	
Johns Lake, East,	A	
Johns Lake, West,	A	
Kay's Pond,	B	
Mirror Lake,	B	Sucker River, 4 upstream limit is old Grand Marais/Seney Road Bridge.
N. (Upper) Shoe Lake,	B	
Rock River Pond,	A	
Rock Lake,	A	
Sawaski Pond, (T44N, R19W, S14)	B	
Sitka Lake,	A	
Sullivan Lake,	A	
Trueman Lake,	A	
Streams		
Anna River, from Railroad Bridge (T46N, R19W, S14) downstream to Lake Superior.	4	
Au Train River, from Powerhouse below M-94 downstream to Lake Superior.	4	
Allegan		
Lakes	Type	
Kalamazoo Lake/Silver Lake, from US-31 down to Lake Michigan.	F	
Lake 16,	C	
Pike Lake,	C	
Streams		
Black River Mainstream, from confluence of North and South branches down to Lake Michigan.	3	
Gun River Mainstream, from 122nd Ave. (T2N, R11W, S12) downstream to US 131 Bridge (T1N, R11W, S18).	4	

Kalamazoo River, from Calkins Dam (T2N, R14W, S15) downstream to US-31.	3	Manistee River, from headwaters downstream to M-72.	2
Middle Branch Black River, from confluence of Spring Br. Creek (T1N, R15W, S22) downstream to confluence of Main Branch Black River.	4	Arenac	
N. Br. Black River, from 111th Ave. (T1N, R16W, S3) downstream to confluence with Mainstream.	3	Streams	Type
Pine Creek Tributary, from 101st Ave. to confluence with Pine Creek.	4	East Branch AuGres River (Whitney Drain), from M-55 downstream to Saginaw Bay.	3
Rabbit River Mainstream, from US-131 Bridge (T4N, R11W, S31) downstream to confluence with Kalamazoo River (T3N, R15W, S16).	4	Rifle River, from Sage Lake Road (T23N, R3E, S22) downstream to Saginaw Bay.	3
Silver Creek, from M-89 Bridge (T1N, R11W, S26) downstream to confluence with Kalamazoo River.	2	Baraga	
Swan Creek, from 109th Ave. (T1N, R14W, S7) downstream to confluence with Kalamazoo River (T2N, R14W, S9). Note: On the Swan River from mouth upstream to the dam at 118th Ave. it shall be unlawful to use other than one single-pointed unweighted hook measuring 3/8 inch or less from point to shank. SC- Closed to Fishing -September 1 – November 30 from mouth upstream to Diversion Dam (“The Tubes”), T2N, R14W, S9.	4	Lakes	Type
Alpena		Alberta Pond, (Designated Trout Lake)	B
Streams	Type	Lake Alice,	D
Devils River, from US-23 Bridge downstream to Lake Huron.	4	Roland Lake, (Designated Trout Lake)	B
Long Lake Creek, downstream limit is Lake Huron.	4	Streams	
Thunder Bay River, from Ninth Street Dam downstream to Lake Huron.	3	Falls River, from US-41 to Lake Superior.	3
Antrim		Huron River, from Big Eric’s Bridge (T52N, R30W, S35) to Lake Superior.	4
Lakes	Type	Otter River, from confluence of North and West Branch Otter River downstream to Sturgeon River.	3
Bellaire Pond,	C	Ravine River, upstream limit is Sicotte Road.	4
Elk Lake,	E	Silver River, upstream limit is Silver Falls.	4
Green Lake,	B	Slate River, upstream limit is Slate Falls.	4
Torch Lake,	E	Sturgeon River, from US-41 downstream to Prickett Dam.	2
Streams		Sturgeon River, from Prickett Dam downstream to Lake Superior. SC- Closed to Fishing -April 1 - June 30 from the Prickett Dam downstream to mouth of Clear Creek (T50N, R35W, S12).	3
Elk River, from Power Dam below Elk Lake downstream to Lake Michigan.	3	Barry	
Elk River Bypass, from Bypass Dam downstream to Lake Michigan.	4	Lakes	Type
Grass River (inc. Clam Lake and Clam River), from Lake Bellaire downstream to Torch Lake.	4	Deep Lake,	B
Intermediate River, from Intermediate Dam downstream to Lake Bellaire. SC- Closed to Fishing - April 1 - May 14 Bellaire Dam to Highway M-88 Bridge.	4	Gull Lake,	E
Jordan River, from Graves Crossing (T31N, R6W, S32) downstream to Lake Charlevoix.	4	Streams	
		Bassett Creek, from Baker Lake downstream to confluence with Thornapple River.	4
		Cedar Creek, upstream limit is M-37 (T2N, R8W, S9).	2
		Cedar Creek, from sources downstream to M-37 (T2N, R8W, S9).	4
		Coldwater River, from M-43 Bridge (T4N, R8W, S16) downstream to Freeport Road Bridge.	2
		Coldwater River, from Freeport Rd. downstream to confluence with Thornapple River.	4
		Turner Creek, from confluence with Baker Creek (T3N, R10W, S23) downstream to T3N, R10W, S9.	4

Unnamed Tributary on North Bank of Coldwater River, (T4N, R7W, S18).	2	Streams	
Bay		Prairie River,	4
Streams	Type	from Bowers Road (T8S, R7W, S4)	
Saginaw River,	3	downstream to MacKale Road (T7S, R9W, S8).	
Benzie		Calhoun	
Lakes	Type	Streams	Type
Betsie Lake, from M-22 down to Lake Michigan.	F	South Branch Rice Creek,	4
Crystal Lake,	E	Nottawa Creek,	4
Streams		Cass	
Betsie River,	4	Lakes	Type
from Kurick Rd. downstream to M-22.		Birch Lake,	B
SC-Closed to fishing year-round within 100 feet of the lamprey barrier and fish passage facility at T25N, R15W, S2).		Harwood Lake,	C
Otter Creek,	4	Hemlock Lake,	B
from Otter Lake outlet (T27N, R14W, S13) downstream to Lake Michigan.		Shavehead Lake,	B
Platte River,	4	Streams	
from US-31 East of Honor downstream to Lake Michigan.		Dowagiac Creek,	2
Note: On the Platte River, Benzie County, it shall be unlawful to use other than one single-pointed unweighted hook measuring 3/8 inch or less from point to shank.		from Mckenzie Road (T5S, R14W, S31) downstream to confluence with Lake Lagrange (T6S, R15W, S11).	
SC- Closed to Fishing -Year-round within 300 feet of the upper (hatchery) and lower weirs.		Dowagiac Drain,	4
SC- Closed to Fishing - Jan., Feb., March from the upper (hatchery) weir downstream to Platte Lake.		Dowagiac River Mainstream,	4
Berrien		from source downstream to Pucker Street (T7S, R17W, S13).	
Lakes	Type	Peavine Creek,	2
Singer Lake,	C	from M-51 (T6S, R16W, S22) downstream to Dowagiac River.	
Streams		Pokagon Creek,	2
Blue Creek ,	4	from Anderson Road (T7S, R16W, S2) downstream to Dowagiac River.	
Brandywine Creek,	2	Charlevoix	
from US-12 (T8S, R16W, S7) downstream to St. Joseph River.		Lakes	Type
Dowagiac River,	3	Lake Charlevoix,	E
from Niles Dam at Pucker Street (T7S, R17W, S13) downstream to confluence with St. Joseph River.		Thumb (Louise) Lake,	B
Galien River Mainstream,	4	Walloon Lake,	B
downstream limit is Lake Michigan.		Streams	
South Branch Galien River Mainstream only,	4	Boyne River,	4
downstream limit is the confluence with Galien R.		from P. H. Dam downstream to Lake Charlevoix.	
St. Joseph River	3	Note: On the Boyne River, from the mouth upstream to dam (T32N, R3W, S5) it shall be unlawful to use other than one single-pointed unweighted hook measuring 3/8 inch or less from point to shank.	
from Indiana state line downstream to Lake Michigan.		Jordan River,	4
Branch		from Graves Crossing (T31N, R6W, S32) downstream to Lake Charlevoix.	
Lakes	Type	Medusa Creek	
Cary Lake,	C	SC- Closed to Fishing - whenever weir is in place. Tributary to Lake Michigan (T34N, R8W, S28) and including an area of Lake Michigan in a radius of 100 feet from the mouth of Medusa Creek.	
Gilead Lake,	C	Cheboygan	
Lake Lavine,	C	Lakes	Type
Rose Lake (Lake of the Woods),	C	Hemlock Lake,	D
		Silver Lake,	B
		Twin Lake #1,	D
		Weber Lake,	B
		Streams	
		Black River,	2
		from Tin Shanty Bridge Road downstream to Tower Dam. (continued on page 11)	

Black River, <i>continued</i> 2 SC- Closed to Fishing - April 1 - May 15 from Alverno Dam downstream to Mognrain Bridge (T37N, R1W, S26). SC- Closed to Fishing - April 1 - June 15 between Kleber Dam and Red Bridge (T35N, R1E, S5).		Manistee River, 2 from headwaters downstream to M-72.	
Cheboygan River, 3 from Cheboygan Dam downstream to Lake Huron.		Manistee River, 5 from M-72 downstream to CCC Bridge.	
Maple River, 2 from dam (T36N, R4W, S10) in Emmet County downstream to mouth.		North Branch AuSable River, 5 from Sheep Ranch downstream to confluence with Mainstream.	
Mill Creek, 4		South Branch AuSable River, 5 from Lower High Banks downstream to confluence with Mainstream.	
Pigeon River, 2 from dam (T32N, R1W, S19) downstream to M-68 Bridge.		South Branch AuSable River, 7 from Chase Bridge downstream to Lower High Banks.	
Pigeon River, 4 from M-68 Bridge downstream to mouth.		Delta	
Sturgeon River, 4 from Afton Rd. (Also called Webb Rd. or Wolverine Rd.) downstream to mouth.		Lakes	Type
Chippewa		Bear Lake,	A
Lakes	Type	Carr Lake,	A
Dukes Lake,	A	Carr Ponds,	A
Highbanks Lake,	A	Kilpecker Pond,	A
Naomikong Lake,	A	Norway Lake,	A
Naomikong Pond,	A	Section 1 Pond,	A
Roxbury Pond East,	A	Wintergreen Lake,	A
Roxbury Pond West,	A	Zigmaul Pond,	A
Trout Brook Pond,	A	Streams	
Streams		Bark River, 4 from 9 Road (Section Line Between T38N, R24W, S20 & 29) downstream to Lake Michigan.	
Albany Creek, 4 from bridge below lamprey weir to Lake Huron.		Big Fishdam River, 4 from County Road 2222 Bridge (T41N, R18W, S9) downstream to Lake Michigan.	
E. Br. Tahquamenon River, 2 downstream limit is North Hulbert Road (T46N, R07W, S9) Bridge.		Days River, 4 from Highway M-35 Bridge downstream to Lake Michigan.	
Halfaday Creek, 4 from Lakeshore Drive downstream to Lake Superior.		Escanaba River, 2 from mouth of the W. Br. Escanaba R. (T43N, R25W, S3) downstream to Boney Falls Dam (T41N, R24W, S2).	
Pendill's Creek, 4 from Second Dam (T47N, R4W, S28) downstream to Lake Superior.		Escanaba River, 6 from Boney Falls Dam downstream to mouth of Silver Cr. (T40N, R23W, S11).	
Pine River, 4 from H-40 Bridge downstream to Lake Huron.		Ford River, 4 from T43N, R27W, S35 (Dickinson County) downstream to Lake Michigan	
Clare		Rapid River, 4 from County Road S-15 (T42N, R21W, S19) downstream to Lake Michigan.	
Lakes	Type	Sturgeon River, 4 from County Road 442 Bridge (T42N, R20W, S13) downstream to Lake Michigan.	
Little Long Lake,	B	Tacoosh River, 4 from 29th Lane (County Road G-24) downstream to Lake Michigan.	
Crawford		Whitefish River, 4 from 38th Road (U.S.F.S. 2236) downstream to Lake Michigan.	
Lakes	Type	Dickinson	
Bright Lake,	A	Lakes	Type
Glory Lake,	A	Bass Lake,	B
Kneff Lake,	A	Lake 29, (T41N, R29W, S29)	A
Shupac Lake,	A		
Streams			
AuSable River Mainstream, 2 from Grayling city dam downstream to Burton's Landing.			
AuSable Mainstream, 7 from Burton's Landing downstream to Wakeley Bridge.			
AuSable River Mainstream, 2 from Wakeley Bridge downstream to Rainbow Bend powerline (T26N, R2E, S4)			

Emmet	
Lakes	Type
Walloon Lake,	B
Streams	
Bear River,	3
from Lake Street Dam (T34N, R5W, S6) downstream to Lake Michigan. Note: On the Bear River, from the mouth upstream to Lake Street Dam (T34N, R5W, S6) it shall be unlawful to use other than one single-pointed unweighted hook measuring 3/8 inch or less from point to shank.	
Carp Lake River,	3
from Bridge in T39N, R4W, S32 downstream to Lake Michigan.	
Maple River,	2
from dam T36N, R4W, S10, Emmet County downstream to mouth.	
Gogebic	
Lakes	Type
Beatons Lake,	B
Black River Lake,	B
Castle Lake,	A
Cornelia Lake,	A
Finger Lake,	B
Imp Lake,	B
Little Duck Lake, (Designated Trout Lake)	B
Mishike Lake,	A
Moon Lake,	B
Redboat Lake,	D
Streams	
Big Carp River,	3
from a point 100 yards downstream of Bathtub Falls (T50N, R45W, S1) to Lake Superior.	
Black River,	3
from Rainbow Falls (T49N, R46W, S10) downstream to Lake Superior.	
Black River,	2
from US-2 downstream to Rainbow Falls.	
Duck Creek,	6
upstream limit is railroad bridge in T44N, R39W, S16 SE1/4 SE1/4.	
Maple Creek,	3
from Bridge in (T49N, R46W, S18) downstream to Lake Superior.	
Middle Branch Ontonagon River,	2
downstream limit is Agate Falls.	
Ohman Creek,	3
from County Road 505 downstream to Lake Superior.	
Presque Isle River,	2
from confluence of East & West Br. Presque Isle River, downstream to Manabezho Falls.	
Presque Isle River,	3
from Manabezho Falls to Lake Superior.	
Grand Traverse	
Lakes	Type
Duck Lake,	B
Elk Lake,	E
Green Lake,	B
Sand Lake #1,	C
Sand Lake #2,	D
Streams	
Boardman River,	3
from Sabin Dam downstream to Lake Michigan. SC- Closed to Fishing - September 1-October 31 from North Union Street Bridge in Traverse City downstream to US-31 highway bridge. SC- Closed to Fishing - Whenever weir is in place within 300 feet upstream or downstream of weir in Traverse City.	
Hillsdale	
Lakes	Type
Bear Lake,	C
Bird Lake,	C
Hemlock Lake,	C
Houghton	
Lakes	Type
Clear Lake,	D
Emily Lake,	B
Lake Gerald,	B
Lake On Three,	B
Penegor Lake,	A
Perrault Lake,	D
Roland Lake,	B
Streams	
Big Traverse River,	3
upstream limit is Gay-Lake Linden Road.	
Elm River,	4
from Road Bridge between (T53N, R36W, S3 & 10) downstream to Lake Superior.	
Graveraet River,	4
from mouth of Deer Cr. (T45N, R36W, S2) downstream to Lake Superior.	
Little Elm River,	4
from Agate Beach Road (T53N, R36W, S6) downstream to Lake Superior.	
Otter River,	3
from confluence of North and West Branch Otter River downstream to Sturgeon River.	
Pilgrim River,	3
upstream limit is Hwy US-41.	
Salmon Trout River,	3
from Redridge Dam downstream to Lake Superior.	
South Branch Elm River,	4
from bridge T54N, R36W, S29 & 32 downstream to Lake Superior.	
Trap Rock River,	4
upstream limit is Cemetery Road (T56N, R32W, S29).	
Huron	
Streams	Type
Bird Creek,	3
Pigeon River,	3
Pinnebog River,	3
Ionia	
Streams	Type
Dickerson Creek,	4
Fish Creek,	4
from Sidney Rd. downstream to confluence with Maple River.	

Prairie Creek,	4	Streams Chippewa River, 3 from Outlet of Lake Isabella, (T15N, R6W, S35) Isabella Co. downstream to confluence with the Tittabawassee River, (T14N, R2E, S21), Midland Co.
Sebewa Creek and Tributaries,	4	
Iosco		
Lakes	Type	
Buck Creek Pond,	D	
Streams		
AuSable River Mainstream,	3	
from Foote Dam downstream to Lake Huron. SC- Closed to Fishing - Year-round, the portion below the Foote Dam including the apron to 175 feet downstream from the dam.		
AuSable River Mainstream,	4	
Alcona Dam to S. Branch River		
East Branch AuGres River (Whitney Drain),	3	
from M-55 downstream to Saginaw Bay SC- Closed to Fishing - December 1 - Friday before last Saturday in April between DNR lamprey weir and Legget Road (T21N, R6E, S10).		
Tawas River,	3	
Van Etten Creek,	3	
from Van Etten Lake downstream to mouth. SC- Closed to Fishing - August 15 - Nov. 30 from dam at Van Etten Lake to mouth at AuSable River in, T24N, R9E, S27 & 34.		
Iron		
Lakes	Type	
Caspian Pond,	B	
Chicagon Lake,	B	
Deadman's Lake,	A	
Ellen Lake,	B	
Forest Lake,	D	
Fortune Pond,	A	
Golden Lake,	B	
Hannah-Webb Lake,	A	
Killdeer Lake,	A	
Long Lake,	B	
Madelyn Lake,	A	
Ottawa Lake,	B	
Skyline Lake,	A	
Spree Lake,	A	
Timber Lake,	D	
Streams		
Cooks Run River,	2	
from U.S. Forest Hwy. 16 downstream to mouth at South Br. of the Paint River.		
Fence River, (includes portions of E. Br. Fence & Wilson Cr. Tribs.) from Fence R. grade downstream to mouth of Three Mile Cr. (T44N, R31W, S11).	2	
Iron River,	2	
from Highway US-2 Bridge (T43N, R33W, S25) downstream to mouth at Brule River (T42N, R34W, S29).		
Paint River, South Branch,	2	
from mouth of Cooks Run (T44N, R36W, S28) downstream to mouth of North Branch of the Paint River (T44N, R35W, S8).		
Isabella		
Lakes	Type	
Blanchard Pond,	A	
Streams		
Chippewa River,	3	
from Outlet of Lake Isabella, (T15N, R6W, S35) Isabella Co. downstream to confluence with the Tittabawassee River, (T14N, R2E, S21), Midland Co.		
Jackson		
Lakes	Type	
Farwell Lake,	C	
Swains Lake,	C	
Kalamazoo		
Lakes	Type	
Gull Lake,	E	
Little Paw Paw Lake,	B	
Ruppert Lake,	C	
Streams		
Augusta Creek,	4	
from Little Gilkey Lake and Fair Lakes outlets downstream to Knappen Mills Dam.		
Portage Creek,	4	
downstream limit is Kilgore Rd. (T3S, R11W, S3).		
Spring Brook,	2	
from DE Ave. (T1S, R10W, S19) downstream to mouth (T1S, R11W, S27).		
Kalkaska		
Lakes	Type	
Bear Lake,	B	
Big Blue Lake,	B	
Big Guernsey Lake,	C	
Big Twin Lake,	C	
N. Blue Lake,	B	
Starvation Lake,	C	
Streams		
Manistee River,	5	
from M-72 downstream to CCC Bridge.		
Manistee River,	2	
from CCC Bridge (T26N, R6W, S26) downstream to US-131.		
Rapid River,	4	
from Antrim (Rugg) Pond downstream to Torch River.		
Torch River,	4	
from Torch Lake downstream to Lake Skegemog.		
Kent		
Lakes	Type	
Lime Lake,	C	
Marjella Lake,	C	
Streams		
Ball Creek,	4	
downstream limit is confluence with Rogue River.		
Buck Creek,	4	
downstream limit is confluence with Grand River.		
Coldwater River,	4	
from Freeport Rd. downstream to confluence with Thornapple River.		
Nash Creek,	4	
downstream limit is confluence with Rogue River.		
Rogue River,	4	
downstream limit is confluence with Grand River.		

Keweenaw		Streams	
Lakes	Type	Crystal River,	3
Eliza Lake,	B	from Fisher Dam downstream to Lake Michigan.	
Lake Fanny Hooe,	B	Leland River,	3
Lost Lake,	D	SC- Closed to fishing during October and November.	
No Name Pond,	A	Shalda Creek,	4
Streams		from Little Traverse Lake outlet (T29N, R13W, S10)	
Eagle River,	4	downstream to Lake Michigan.	
upstream limit is dam at Eagle River Village.		Lenawee	
Fanny Hooe River,	4	Lakes	Type
upstream limit is Lake Fanny Hooe.		Allens Lake,	C
Silver River,	4	Deep Lake,	C
upstream limit is Hwy M-26.		Livingston	
Silver River,	4	Lakes	Type
upstream limit is Falls (T58N, R32W, S26).		Trout Lake,	C
Tobacco River,	4	Spring Mill Pond, (Island Lake Recreation Area)	
upstream limit is mouth of Black Brook Creek.		Research Area: No fishing March 15 - March 31. Catch and release fishing for trout - artificial lures only - April 1 through the Friday before the last Saturday in April; from the last Saturday in April through March 14, 5 fish limit, 8 inch minimum size, no more than 3 fish 15 inches or larger, artificial and natural baits may be used.	
Lake		Luce	
Streams	Type	Lakes	Type
Little Manistee River,	5	Belle Lake 1,	E
from Spencer's Bridge (T19N, R13W, S5)		Bennett Springs Lake,	A
downstream to Johnson's Bridge (T20N, R14W, S24).		Brockies Pond, (T46N, R11W, S1)	A
Little Manistee River,	4	Bullhead Lake,	A
from Johnson's Bridge downstream to Manistee Lake.		Camp 8 Lake, (Designated Trout Lake)	B
SC- Closed to Fishing - January 1- March 31 - from a point 300 feet upstream of the DNR weir to Spencer's Bridge.		Dairy Lake,	A
Pere Marquette River,	7	Deer Lake,	D
from M-37 downstream to Gleason's Landing (T17N, R13W, S18).		Dillingham Lake,	A
Pere Marquette River,	4	Holland Lake,	A
from Gleason's Landing (T17N, R13W, S18)		Jack Lake,	A
downstream to Indian Bridge (Reek Rd.).		Little Whorl Lake,	A
Pine River,	2	Moon Lake,	D
from Elm Flats Public Access Site to confluence with Tippy Dam backwaters.		Peanut Lake,	E
Baldwin River,		Pratt Lake,	A
Note: A Type 1 stream		Pretty Lake (Designated Trout Lake),	B
SC- Closed to Fishing - Tuesday following Labor Day through Friday before last Saturday in April from the Upper Dam at the site of the old Baldwin Fish Hatchery, downstream to the boundary fence on the south side of the public access site on Baldwin Road including the raceways (T17N, R13W, S3).		Round (N. Manistique) Lake,	E
Lapeer		Sid Lake,	D
Streams	Type	Silver Creek Pond,	A
South Branch Flint River,	4	Spring Creek Pond,	A
from Davison Lake Rd., (T6N, R10E, S34).		Syphon Lake,	A
Lapeer Co. downstream to Higley Rd., (T7N, R10E, S15).		Tank Lake,	B
Leelanau		Trout Lake,	A
Lakes	Type	Ward Lake,	A
Big Glen Lake,	E	Wolverine Lake,	A
Lime Lake,	C	Youngs Lake,	A
North Lake Leelanau,	E	Streams	
Mackinac		Blind Sucker River,	4
Lakes	Type	upstream limit is Blind Sucker Flooding Dam.	
Castle Rock Pond,	A	Two-Hearted River,	4
Millecoquins Pond,	A	upstream limit is Reed and Green Bridge.	

Streams		Pine River,	2
Black River,	4	from Elm Flats Public Access Site to confluence with Tippy Dam backwaters.	
Brevoort River,	4	Marquette	
upstream limit is Peters Truck Trail Footbridge.		Lakes	Type
Carp River,	4	Angeline Lake,	B
mainstream only.		Arfelin Lake,	B
Crow River,	4	Bass Lake,	B
upstream limit is outfall of Amadon Pond.		Bedspring Lake,	A
Milakokia River,	4	Big Trout Lake,	E
upstream limit is Inland-Limestone Co. Railroad Bridge (T41N, R13W, S1).		Brocky Lake,	B
Millecoquins River,	4	Cecilia's Pond,	A
upstream limit is H-40 Bridge.		Cedar Lake,	B
Pine River,	4	Clear Lake,	A
from H-40 Bridge downstream to Lake Huron.		Cranberry Lake,	A
Macomb		Crooked Lake,	B
Streams	Type	Forestville Basin,	B
Clinton River,	4	Island Lake (T45N, R30W, S14),	A
from Yates Dam above Dequindre Rd. downstream to Lake St. Clair.		Just Lake,	A
N. Branch Clinton River,	4	Keyhole Lake, East,	D
from dam above Romeo-Plank Rd. downstream to confluence with Clinton River.		S. Kidney Lake (T45N, R26W, S28),	D
Manistee		Little Brocky Lake,	B
Lakes	Type	Little Shag Lake,	B
Arcadia Lake,	F	Log Lake,	A
from inlet of Bowens Creek to Lake Michigan.		Moccasin Lake,	A
Manistee Lake,	F	Pauls Lake, North,	D
from Railroad Bridge below M-55 (T21N, R16W, S6) to Lake Michigan.		Pauls Lake, South,	D
SC- Closed to Fishing - September 6 - October 15 or whenever the established quota of chinook eggs are taken - The southern end of Manistee Lake in the vicinity of the mouth of the Little Manistee River, being that area of Manistee Lake south of a line drawn from a squared red post, located 100 feet southeast of the launch ramp at the DNR Public Access Site on the east shore, extending southwesterly to a squared red post on the west shore located near the southern end of the Packaging Corporation of America plant.		Perch Lake,	B
Portage Lake,	F	Rockingchair Lake, North,	D
Streams		Rockingchair Lake, South,	D
Bear Creek,	3	Section 13 Lake,	A
from County Road 600 (T23N, 14W, S6) downstream to confluence with Manistee R.		Silver Lake Basin,	B
Betsie River,	4	Silver Lake,	A
from Kurick Rd. downstream to M-22.		Slough Lake,	A
Little Manistee River,	4	Sporley Lake,	E
from Johnson's Bridge downstream to Manistee Lake.		Squaw Lake,	B
SC- Closed to Fishing - September 1 - November 14 and January 1 - March 31 from a point 300 feet downstream from the DNR weir in T21N, R16W, S25 to Manistee Lake.		Strawberry Lake,	D
SC- Closed to Fishing - Year-round within 300 feet of the DNR weir, T21N, R16W, S25.		Swanzy Lake,	A
SC- Closed to Fishing - January 1 - March 31 from a point 300 feet upstream of the DNR weir to Spencer's Bridge.		Twin Lake (T45N, R30W, S23),	B
Manistee River,	4	Wolf Lake,	B
from Hodenpyl Res. downstream to Red Bridge.		Streams	
Manistee River,	3	Big Garlic River,	4
from Tippy Dam downstream to Railroad Bridge below M-55 (T21N, R16W, S6).		from Forks (T49N, R27W, S12) downstream to Lake Superior.	
		Carp River,	2
		from Deer Lake Dam (T48N, R27W, S27) downstream to Morgan Creek	
		Carp River,	3
		from Morgan Creek downstream to Lake Superior.	
		Chocolay River,	3
		from confluence of Big Creek (T47N, R24W, S9) downstream to Lake Superior.	
		Dead River,	2
		from Hoist Dam (T48N, R26W, S9) downstream to County Rd. 510 Bridge (T48N, R26W, S15).	
		Escanaba River,	2
		from mouth of the W. Br. Escanaba R. (T43N, R25W, S3) downstream to Boney Falls Dam (T41N, R24W, S2).	
		Ford River,	4
		from T43N, R27W, S33 (Dickinson County) downstream to Lake Michigan.	

<p>Harlow Creek, 4 from Railroad Bridge (T49N, R26W, S24) downstream to Lake Superior.</p>		Menominee	
<p>Iron River, 4 from Lake Independence Dam to Lake Superior.</p>		<p>Streams</p> <p>Big Cedar River, 4 from Veterans Memorial Park Dam (T38N, R26W, S9) downstream to Lake Michigan.</p>	<p>Type</p>
<p>Salmon-Trout River, Research Area: from the last Saturday in April-August 14, Type 2 stream regulations apply EXCEPT brook trout regulations are as follows: 18" minimum size limit, daily harvest/possession is (1) fish. From August 15-Friday before the last Saturday in April, the river is closed to fishing. These regulations apply to that portion of the Salmon-Trout River from Lower Falls (T51N, R28W, S13) down to Lake Superior.</p>		<p>Ford River, 4 from T43N, R27W, S35 (Dickinson County) downstream to Lake Michigan.</p>	
		<p>Walton Creek (River) 4 from Westmann Dam (T35N, R25W, S18) down to Lake Michigan.</p>	
Mason		Midland	
<p>Lakes</p> <p>Pere Marquette Lake, Type F from Old 31 Highway to Lake Michigan.</p>		<p>Streams</p> <p>Chippewa River, 3 from outlet of Lake Isabella, (T15N, R6W, S35) Isabella Co. downstream to confluence with the Tittabawassee River, (T14N, R2E, S21), Midland Co.</p>	<p>Type</p>
<p>Streams</p> <p>Big S. Branch Pere Marquette River, 4 from confluence of Beaver/Winnepesaug Creeks downstream to confluence with Pere Marquette River.</p>		<p>Tittabawassee River, 3 from Sanford Dam downstream to confluence with the Saginaw River. SC- Closed to Fishing -March 16 - Friday before last Saturday in April between Sanford Dam and the mouth of the Salt River (T15N, R1W, S24). SC- Closed to Fishing -March 16 - Friday before last Saturday in April between the Dow Dam and Gordonville Bridge (T13N, R2E, S1).</p>	
<p>Lincoln River, 3 from confluence of N. & S. Branches of Lincoln River, (T19N, R17W, S32) downstream to Lake Michigan.</p>			
<p>Little Manistee River, 4 from Johnson's Bridge downstream to Manistee Lake. SC- Closed to Fishing - January 1-March 31 from a point 300 feet upstream of the DNR weir to Spencer's Bridge.</p>			
<p>Pere Marquette River, 4 from Gleason's Landing (T17N, R13W, S18) downstream to Indian Bridge (Reek Rd.).</p>			
<p>Pere Marquette River, 3 from Indian Bridge (Reek Rd.) downstream to Old US-31. SC- Closed to Fishing - When the lamprey barrier is in operation, from 300 feet of the downstream side of the lamprey barrier in T18N, R16W, S21 up to the mouth of Black Creek.</p>			
<p>Sable River, 4 from Freesoil Rd. (T20N, R15W, S21) downstream to Hamlin Lake.</p>			
<p>Sable River, 3 from Hamlin Lake Dam downstream to Lake Michigan. Note: On the Sable River, from the mouth upstream to Hamlin Lake Dam it shall be unlawful to use other than one single-pointed unweighted hook measuring 3/8 inch or less from point to shank.</p>			
Mecosta		Missaukee	
<p>Streams</p> <p>Little Muskegon River, Type 4</p>		<p>Streams</p> <p>Clam River, Type 2 from Lachance Rd. (T22N, R8W, S21) downstream to Blue Rd. (T22N, R8W, S27).</p>	<p>Type</p>
<p>Muskegon River, 4 from US-10 downstream to River Bend Bluffs Public Access Site (T15N, R9W, S31).</p>			
		Montcalm	
		<p>Lakes</p> <p>Marl Lake, Type C</p> <p>Nevins Lake, C</p>	<p>Type</p>
		<p>Streams</p> <p>Dickerson Creek, 4</p>	
		Montmorency	
		<p>Lakes</p> <p>Avalon Lake, Type B</p> <p>Clear Lake, B</p> <p>Lake Fifteen, B</p> <p>McCormick Lake, B</p>	<p>Type</p>
		<p>Streams</p> <p>Black River, Research Area: from Tin Shanty Bridge Road downstream to the Town Corner Lake stairs (T32N, R1E, S31 SE/SE): open season is all year; possession season is the last Sat. in April - Sept. 30; only artificial lures may be used; it is unlawful to use or possess live bait, dead or preserved bait, organic or processed food, or scented food on any of the waters or on shore; minimum size limit 10 inches for brook trout; 12 inches for brown trout; possession limit (2) trout.</p>	
		Muskegon	
		<p>Lakes</p> <p>Duck Lake, Type F from Nestrom Rd. to Lake Michigan.</p>	<p>Type</p>

Half Moon Lake, C	Stony Lake, F from inlet of Stony Creek to Lake Michigan.
Mona Lake, F from US-31 to Lake Michigan.	Streams North Branch Pentwater River, 4 from Oceana Dr. downstream to confluence with mainstream of Pentwater River.
Muskegon Lake, F from M-120 to Lake Michigan.	
White Lake, F from Business Route US-31 to Lake Michigan.	
Streams Cedar Creek, 3 from River Rd. (T11N, R15W, S33) downstream to confluence with Muskegon R.	
Muskegon River, 3 from Bridge Street (new bridge T12N, R13W, S24) Garfield Twp., downstream to M-120.	North Branch White River, 4 from Arthur Rd. downstream to confluence with White River.
North Branch Crockery Creek, 4 mainstream from Kenowa Ave. (T10N, R13W, S36) downstream to confluence with Crockery Cr. mainstream at Ravenna.	Pentwater River, 4 from Hart Dam downstream to confluence with Pentwater Lake.
White River, 4 from Hesperia Dam downstream to Lake Michigan.	
Ogemaw	
Lakes Type	Lakes Type
Condon Lake, C	Devoe Lake, B
Crystal Lake, C	Grousehaven Lake, B
	Lake George, B
	Streams
	Rifle River, 3 from Sage Lake Road (T23N, R3E, S22) downstream to Saginaw Bay.
Newaygo	
Lakes Type	
Condon Lake, C	
Crystal Lake, C	
Streams	
Big S. Branch Pere Marquette River, 4 from confluence of Beaver/Winnepesaug Creeks downstream to confluence with Pere Marquette River.	
Little S. Br. Pere Marquette River, 2 from Carlson Bridge (16 Mile Rd.) downstream to Oxbow Bridge (Forman Rd.).	
Muskegon River, 4 from Croton Dam downstream to Bridge Street (New Bridge T12N, R13W, S24) Garfield Twp.	
Muskegon River, 3 from Bridge Street (new bridge T12N, R13W, S24) Garfield Twp., downstream to M-120.	
Tamarack Creek, 4	
White River, 2 from Six Mile Rd. downstream to Baseline Rd.	
Oakland	
Lakes Type	
Maceday Lake, C	
Streams	
Huron River, Research Area: from sign below Moss Lake outlet to signs 100 yds. below Wixom Rd. (T2N, R7E, S13) (2 mi.): April 1-Friday before last Sat. in April artificial flies only, possession limit 0 trout (catch and release). Last Sat. in April-Sept. 30, possession limit 3 trout; bait, lures and flies may be used; 8 inch minimum size limit.	
Oceana	
Lakes Type	
Pentwater Lake, F from confluence of N. and S. branches of Pentwater River to Lake Michigan.	
Silver Lake, F downstream limit is Lake Michigan.	
	Ontonagon
	Lakes Type
	Calderwood Pond, B
	Courtney Lake, A
	Mirror Lake, B
	Paulding Pond, B
	Trout Creek Pond, A
	Streams
	Big Iron River, 3 from Koshak Rd. Bridge (T49N, R43W, S2) downstream to Lake Superior.
	East Branch Ontonagon River, 3 upstream limit is Hwy. M-28.
	East Sleeping River, 3 from railroad trestle (T53N, R38W, S25) downstream to Lake Superior.
	Firesteel River (Including East & West Branch), 3 upstream limit is Hwy. M-26.
	Little Iron River, 3 upstream limit is Nonesuch Falls (T50N, R43N, S1).
	Middle Branch Ontonagon River, 2 downstream limit is Agate Falls.
	Middle Branch Ontonagon River, 3 Agate Falls is upstream limit.
	Misery River, 3 upstream limit is bridge in T53N, R37W, S15.
	Ontonagon River, 3
	West Branch Big Iron River, 3 from Burnt Dam Bridge (T50N, R44W, S36) downstream to confluence with Big Iron River.
	West Branch Ontonagon River, 3 upstream limit is confluence with Victoria Hydro Station tail race (T50N, R39W, S29). SC- Closed to Fishing - April 1 - June 10 from its confluence with the Victoria Hydro Station tail race in the SE1/4 of the SW1/4 of T50N, R39W, S29 upstream to Victoria Dam.

Osceola		Streams	
Lakes	Type	Crockery Creek Mainstream Only,	4
Center Lake,	C	from Moore Rd (T10N, R13W, S4) in Muskegon County downstream to confluence with Grand River (Ottawa County).	
Wells Lake,	C		
Streams		North Branch Crockery Creek,	4
Muskegon River,	4	mainstream from Kenoa Ave. (T10N, R13W, S36) downstream to confluence with Crockery Cr. mainstem at Ravenna.	
from US-10 downstream to River Bend Bluffs Public Access Site (T15N, R9W, S31).		Sand Creek,	4
Oscoda		Presque Isle	
Lakes	Type	Lakes	Type
Crater Lake,	A	Trout Creek Pond (T35N, R5E, S17),	C
Loon Lake,	B	Streams	
Streams		Ocqueoc River,	4
AuSable River Mainstream,	2	from Barnhart Lake downstream to Lake Huron.	
from Wakeley Bridge downstream to Rainbow Bend powerline (T26N, R2E, S4).		Swan River,	3
AuSable River Mainstream,	2	from US-23 Bridge downstream to Lake Huron.	
from Mio Dam down to the Mio powerline at (T26N, R3E, S7).		SC- Closed to Fishing -Whenever weir is in place - from 300 feet above weir to mouth in T35N, R6E, S20 & 29.	
AuSable River Mainstream, Research Area:		Trout River,	3
from Mio power line (T26N, R3E, S7) down to McKinley Bridge: Open season is last Saturday in April-Sept. 30; artificial lures only; minimum size limit 15 inches for brown trout, 12 inches for other trout; possession limit is 2 trout.		from dam (T35N, R5E, S17) downstream to Lake Huron.	
AuSable River Mainstream,	2		
from McKinley Bridge downstream to 4001 Bridge.			
Otsego		Roscommon	
Lakes	Type	Lakes	Type
Big Chub Lake,	B	Higgins Lake,	E
Bridge Lake,	B		
Ford Lake,	D		
Heart Lake,	B		
Pickereel Lake,	A		
Section Four Lake,	D		
West Lost Lake,	D		
Streams		Streams	Type
Black River,	2	Saginaw River,	3
from Town Corner Lake stairs (T32N, R1E, S31 SE/SE) downstream to Tower Dam.		Tittabawassee River,	3
Black River, Research Area: from Tin Shanty Bridge Road downstream to the Town Corner Lake stairs (T32N, R1E, S31 SE/SE): open season is all year; possession season is the last Sat. in April - Sept. 30; only artificial lures may be used; it is unlawful to use or possess live bait, dead or preserved bait, organic or processed food, or scented food on any of the waters or on shore; minimum size limit 10 inches for brook trout; 12 inches for brown trout; possession limit (2) trout.		from Sanford Dam downstream to confluence with the Saginaw River.	
Manistee River,	2		
from Headwaters downstream to M-72.			
Pigeon River,	2		
from Dam (T32N, R1W, S19) downstream to M-68 Bridge.			
Ottawa		Saginaw	
Lakes	Type	Streams	Type
Lake Macatawa,	F	Saginaw River,	3
from River Ave. to Lake Michigan.		Tittabawassee River,	3
Pigeon Lake,	F	from Sanford Dam downstream to confluence with the Saginaw River.	
from Lakeshore Drive to Lake Michigan.			
		Schoolcraft	
		Lakes	Type
		Banana Lake, (Designated Trout Lake)	B
		Bear (Nineteen) Lake, (Designated Trout Lake)	B
		Dutch Fred Lake,	D
		Kings Pond,	A
		Lost Lake,	A
		Ned's Lake,	D
		Spring Pond,	A
		Twilight Lake,	D
		Streams	
		Indian River,	2
		from "Wide Waters" (T44N, R19W, S13) downstream to Indian Lake.	
		Manistique River,	4
		upstream limit is Papermill Dam.	
		Thompson Creek,	1
		SC- Closed to Fishing - Sept. 1 - Friday before last Saturday in April upstream of US-2 (T41N, R16W, S32).	
St. Clair			
		Streams	Type
		Belle River,	4
		Black River,	3
		from private dam in Port Huron State Game Area downstream to confluence with St. Clair River.	

Mill Creek, downstream limit is confluence with Black River.	4	Campbell Creek,	2
		East Branch Paw Paw River and tributaries, downstream limit is M-40 Bridge (T3S, R14W, S13).	2
St. Joseph		Pine Creek, downstream limit is 101st Ave. (T1N, R12W, S32).	4
Lakes Corey Lake,	Type B	South Branch of the Black River, from Hamilton Street Bridge (T2S, R16W, S1) downstream to confluence with mainstream (T1S, R17W, S2). Type 1 from Hamilton St. Bridge up to Bangor City Dam.	3
Streams Curtis Creek and tributaries,	2	South Br. Paw Paw River (aka Gates Drain or West Branch) and tributaries,	4
Flowerfield Creek Mainstream, downstream to confluence with Rocky River.	4	Washtenaw	
Little Swan Creek and tributaries,	4	Lakes Pickerel Lake,	Type C
Mill Creek and tributaries, from Preston Road (T7S, R12W, S7) downstream to impoundment at T7S, R12W, S32.	4	Wayne	
Prairie River Mainstream Only, from Bowers Road (T8S, R7W, S4) downstream to MacKale Road (T7S, R9W, S8).	4	Streams Huron River, from Belleville Lake Dam in Wayne Co. downstream to Lake Erie.	Type 4
Spring Creek Mainstream Only, from M-66 Bridge (T6S, R9W, S11) downstream to confluence with Prairie River (T6S, R10W, S19).	4	Johnson Creek, from confluence with Rouge River to Napier Rd.	6
Unnamed Tributary to Spring Creek (T6S, R10W, S16).	4	Wexford	
Unnamed Tributary (T6S, R10W, S26).	4	Streams Manistee River, from CCC Bridge downstream to US-131.	Type 2
Van Buren		Manistee River, from US-131 downstream to M-115.	4
Lakes Shafer Lake,	Type C	Pine River, from Elm Flats Public Access Site to confluence with Tippy Dam backwaters.	2
Streams Black River Mainstream, from confluence of North and South branches down to Lake Michigan.	3		
Brush Creek Except Reynolds Lake Drain, from 63rd Ave. downstream to confluence with Paw Paw River.	4		

Outdoors-Woman

Becoming an Outdoors-Woman (BOW) offers outdoor skills workshops to women throughout Michigan. At a BOW workshop you will have the opportunity to learn about hunting, shooting sports, fishing, camping, canoeing, fly-tying and much more.

For more information
www.michigan.gov/bow



OFFICIAL
STATE HUNTING & FISHING
REGULATIONS

LIBERTY PRESS PUBLICATIONS



**Reach Every Fisherman or Hunter in Michigan
for an entire season! By placing an ad in the official
Michigan DNR State Hunting and Fishing Regulations**



See us online for up to date
Advertising Information, Prices
and Sizes. As well as links to the
Official Michigan DNR Website for
all your Michigan Hunting and
Fishing Rules and Regulations.

Call-1-800-296-6402 For Advertising Information

www.huntandfishregs.com

Stream Regulations


Type	Open Season	Possession Season	Tackle	Daily Possession Limit	Minimum Size Limit						
					Brook Trout	Brown Trout	Rainbow Trout (Steelhead)	Splake	Lake Trout	Coho, Chinook, & Pink Salmon	Atlantic Salmon
1	Last Sat. in April - Sept. 30	Last Sat. in April - Sept. 30	All	5/3*	8" Lower Peninsula 7" Upper Peninsula	8" Lower Peninsula 7" Upper Peninsula	10"	8"	24"	10"	15"
2	Last Sat. in April - Sept. 30	Last Sat. in April - Sept. 30	All	5/3*	10"	12"	12"	10"	24"	10"	15"
3	All Year	All Year	All	5/3*	15"	15"	15"	15"	24"	10"	15"
4	All Year	Brown trout, Brook trout, Atlantic salmon Last Sat. in April - Sept. 30 Other trout species all year	All	5/3*	8"	10"	10"	10"	24"	10"	15"
5	All Year	Brown trout, Brook trout, Atlantic salmon Last Sat. in April - Sept. 30 Other trout species all year	Artificial flies only+	2	10"	15"	15"	15"	24"	10"	15"
6	All Year	Brown trout, Brook trout, Atlantic salmon Last Sat. in April - Sept. 30 Other trout species all year	Artificial lures only+	2	10"	12"	12"	10"	24"	10"	15"
7	All Year	No-Kill, catch and release only**	Artificial flies only+	0							

* 5 fish, with no more than 3 fish 15 inches or larger, and no more than 1 Atlantic salmon.

** Trout/salmon may not be possessed on Type 7 streams regardless of where caught, EXCEPT: for children under the age of 12, the daily possession limit is one fish, the minimum size limit is 8 inches and the maximum size limit is 12 inches. Fish less than 8 inches or greater than 12 inches must be released.

+ It is unlawful to use or possess live bait, dead or preserved bait, organic or processed food, or scented material on any of the waters or on shore.

Note: It is unlawful to fish for any species or possess fishing devices along a stream closed to fishing.

 **Research Areas:** Portions of the Au Sable River Mainstream (Oscoda County), Black River (Montmorency and Otsego counties), Huron River (Oakland County), Mosquito River (Alger County), Salmon-Trout River (Marquette County) and Seven Mile Creek (Alger County) are under special regulations. Similarly, Spring Mill Pond (Livingston County), is under special regulations. All of these waters are indicated on the maps with gray shading. Please see the county listings for specific regulations on these waters.

Except for streams in the Michigan-Wisconsin Boundary Waters, **any other inland stream not classified by Type is open all year with an 8-inch minimum size limit and a 5 fish daily possession limit, no more than 3 of which may be 15 inches or greater.** Artificial lures and all types of natural bait may be used. Please see Michigan Fishing Guide for Michigan-Wisconsin Boundary Waters regulations.

New Statewide Viral Hemorrhagic Septicemia (VHS) Regulations

Viral Hemorrhagic Septicemia is a virus that affects fish and has been found in several Michigan water bodies. New regulations are in effect to reduce the spread of this pathogen. For more information regarding VHS and the new regulations, visit the DNR Web site at www.michigan.gov/dnrfishing.

Lake Regulations

Type	Open Season	Possession Season	Tackle	Daily Possession Limit	Minimum Size Limit				
					Brook Trout	Brown trout Rainbow trout Splake	Lake Trout	Coho, Chinook, & Pink salmon	Atlantic salmon
A	Last Sat. in April - Sept. 30	Last Sat. in April - Sept. 30	All except minnows	5/3*	10"	12"	15"	10"	15"
B	All Year	All Year	All	5/3*	10"	12"	15"	10"	15"
C	All Year	All Year	All	5/3*	8"	8"	8"	10"	15"
D	Last Sat. in April - Sept. 30	Last Sat. in April - Sept. 30	Artificial lures only**	1	15"	15"	15"	10"	15"
E	All Year	All Year	All	3^	15"	15"	15"	10"	15"
F	All Year	Lake trout May 1- Labor Day Other trout species all year	All	5/3/2+	10"	10"	10"	10"	10"


* 5 fish, with no more than 3 fish 15 inches or larger, and no more than 1 Atlantic salmon.

** On Type D lakes only artificial lures may be used. It is unlawful to use or possess live bait, dead or preserved bait, organic or processed food, or scented material on any of the waters or on shore.

^ No more than 1 Atlantic salmon.

+ Daily harvest limits: 5 in any combination, no more than 3 fish of any one species, except Lake trout and Splake, for Lake trout and Splake - 2 fish.

Except for lakes in the Sylvania Wilderness Area and Michigan-Wisconsin Boundary Waters, **any other inland lake not classified by Type is open all year to the taking of trout with an 8-inch minimum size limit and 5 fish daily possession limit, no more than 3 of which may be 15 inches or greater.** Artificial lures and all types of natural bait may be used. See Michigan Fishing Guide for Sylvania Wilderness Area and Michigan-Wisconsin Boundary Waters regulations.

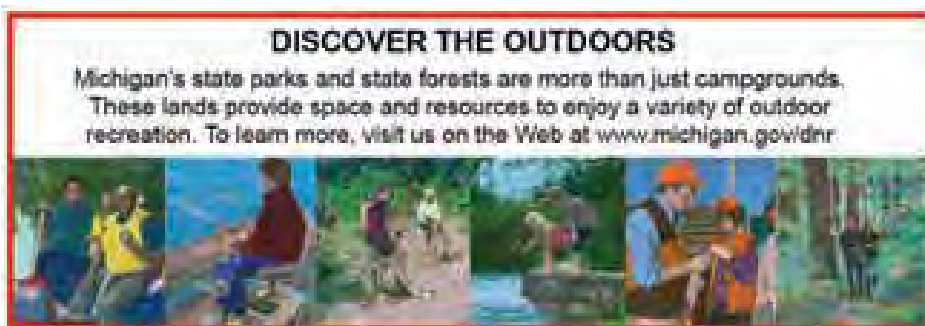
 Any lake regulated by Type (A-F) will be shaded in dark blue or will appear as a blue dot on map pages 23-51. The lake name and type (A-F) will appear in red text.

Note: It is unlawful to fish for any species or possess fishing devices along a lake closed to fishing.

All Grayling must be released immediately

New Statewide Viral Hemorrhagic Septicemia (VHS) Regulations

Viral Hemorrhagic Septicemia is a virus that affects fish and has been found in several Michigan water bodies. New regulations are in effect to reduce the spread of this pathogen. For more information regarding VHS and the new regulations, visit the DNR Web site at www.michigan.gov/dnrfishing.

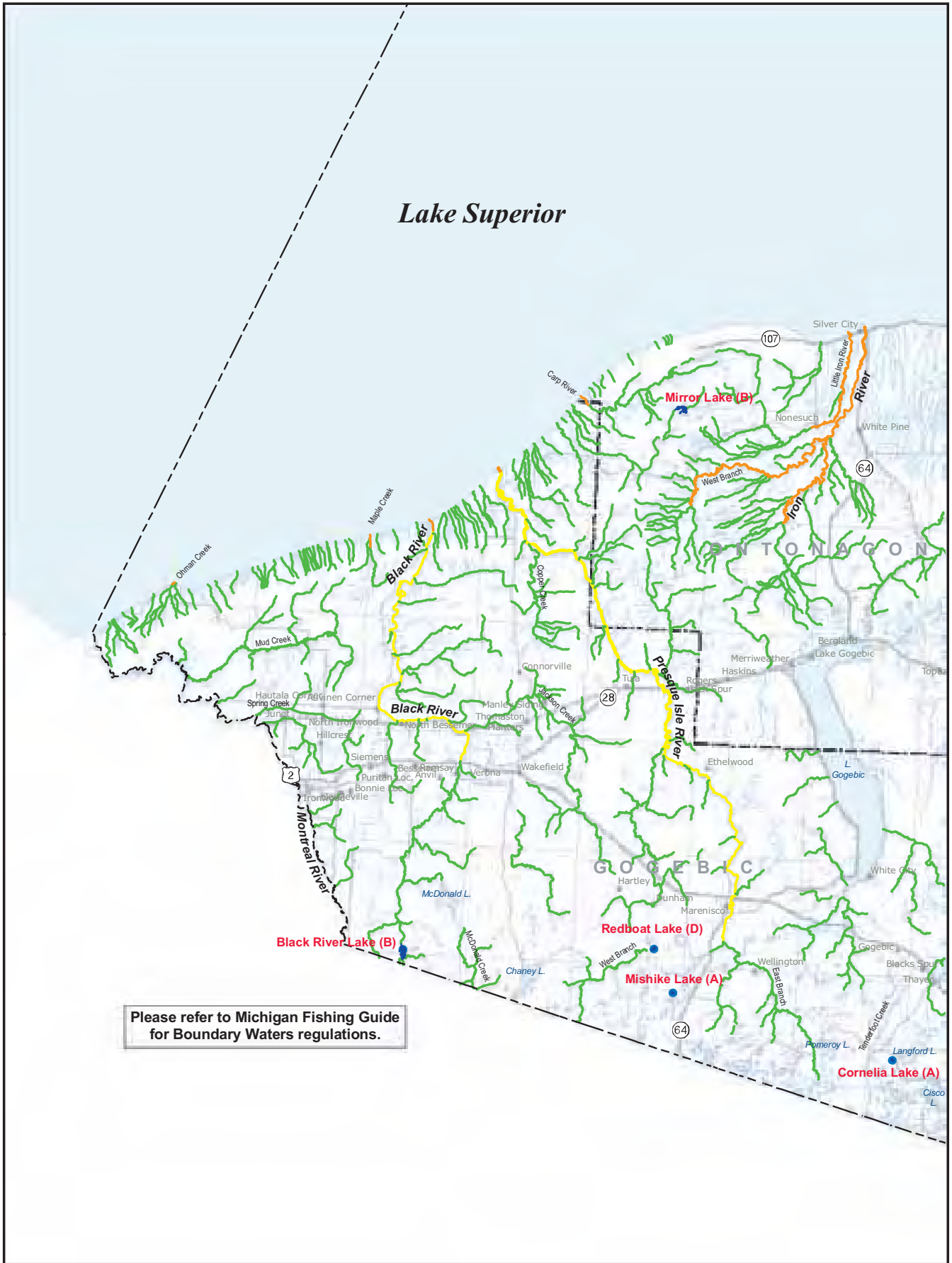


Take a Kid Fishing!

Enjoy These
Free Fishing
Weekends

June 7-8, 2008

Feb. 14-15, 2009



See Page 24

See Page 25

Contact Isle Royale National Park Visitor Center for fishing regulations on inland waters (906-482-0984).

Lake Superior



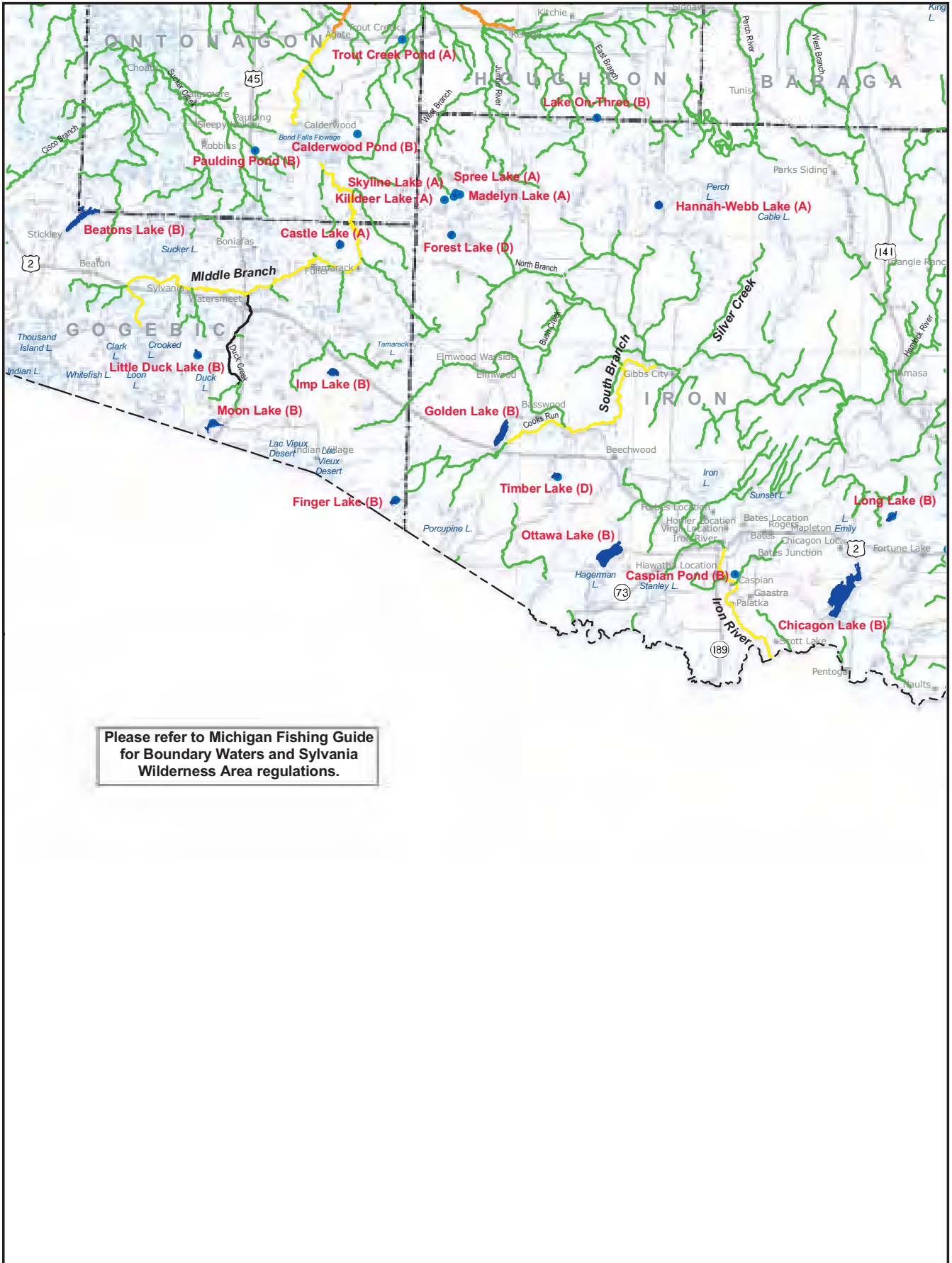
See Page 26

See Page 23

See Page 27

See Page 23

See Page 27



Please refer to Michigan Fishing Guide
for Boundary Waters and Sylvania
Wilderness Area regulations.

Contact Isle Royale National Park Visitor Center for fishing regulations on inland waters (906-482-0984).

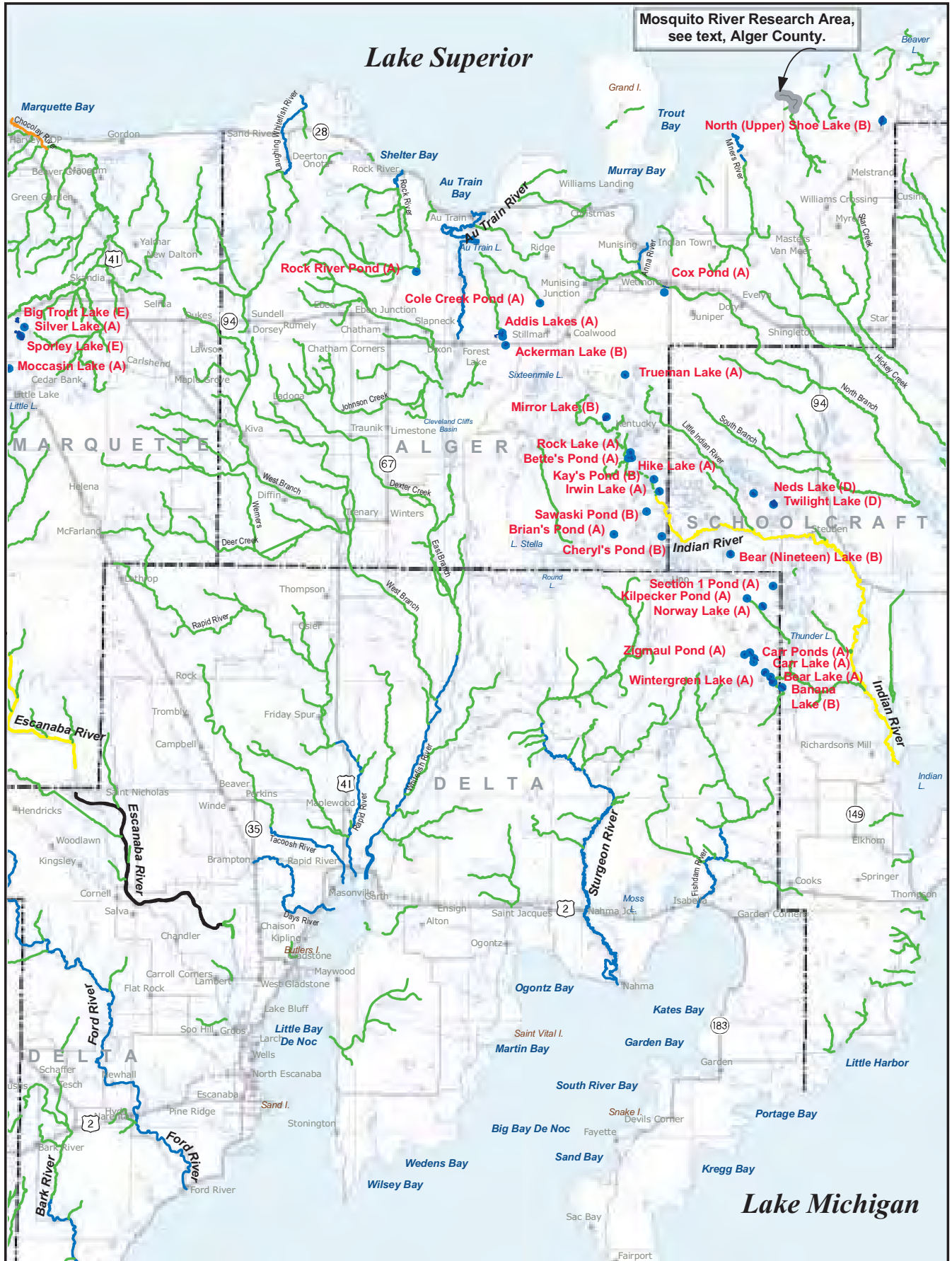
Lake Superior

See Page 24



Salmon-Trout River Research Area, see text, Marquette County.

See Page 27



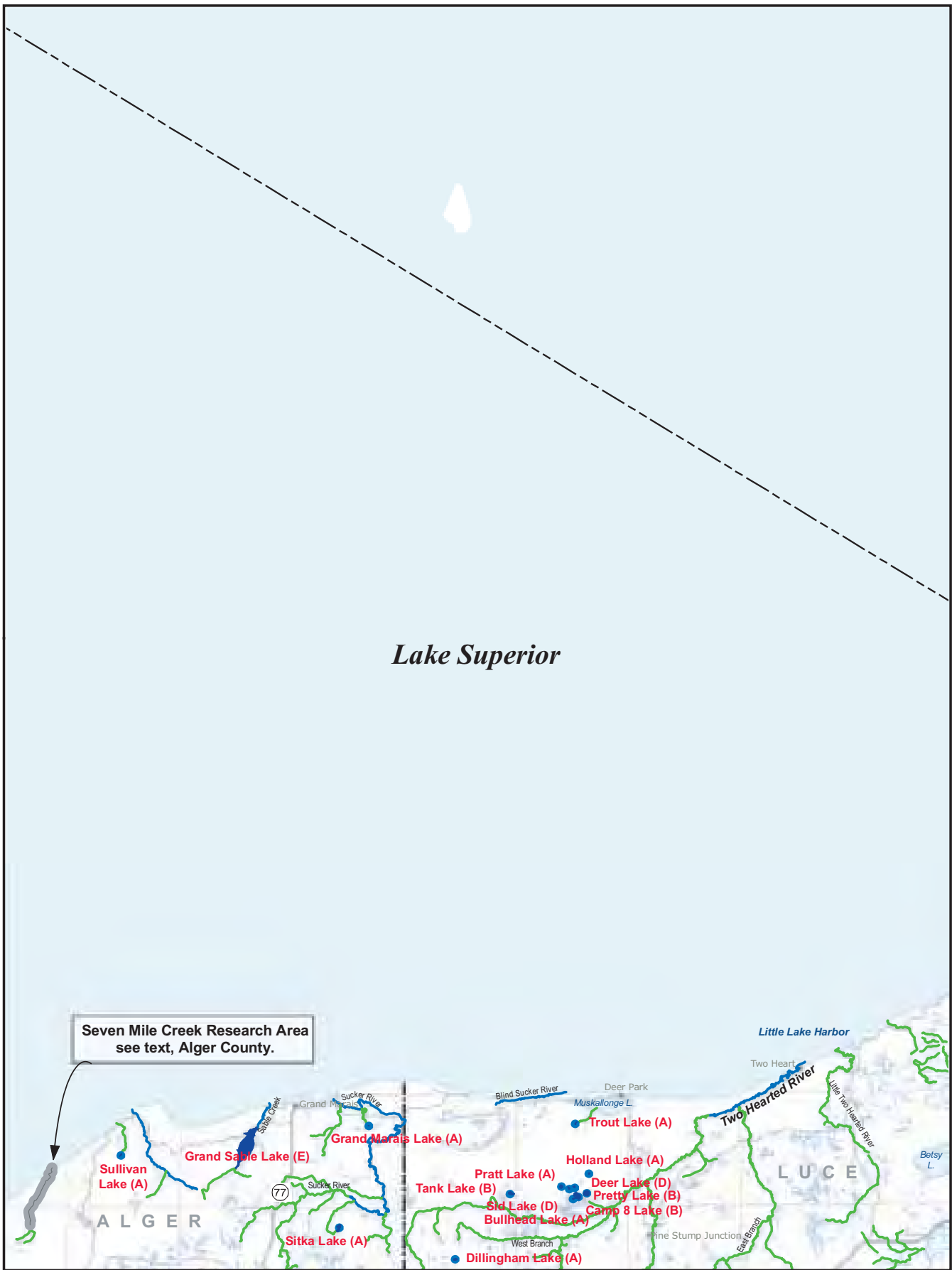
See Page 27

See Page 28

See Page 30

See Page 32

Lake Superior



See Page 29

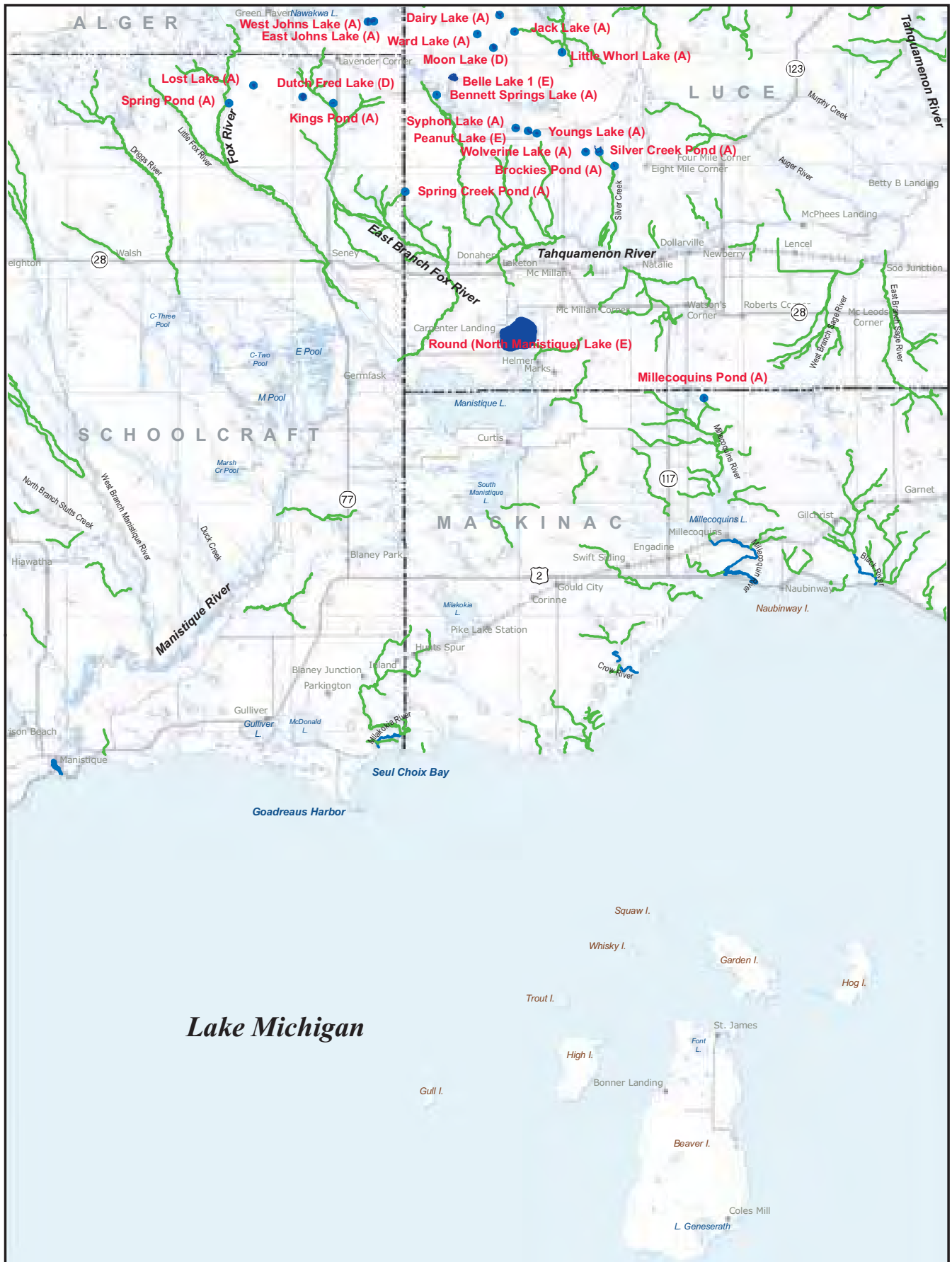
See Page 31

See Page 32



See Page 30

See Page 33



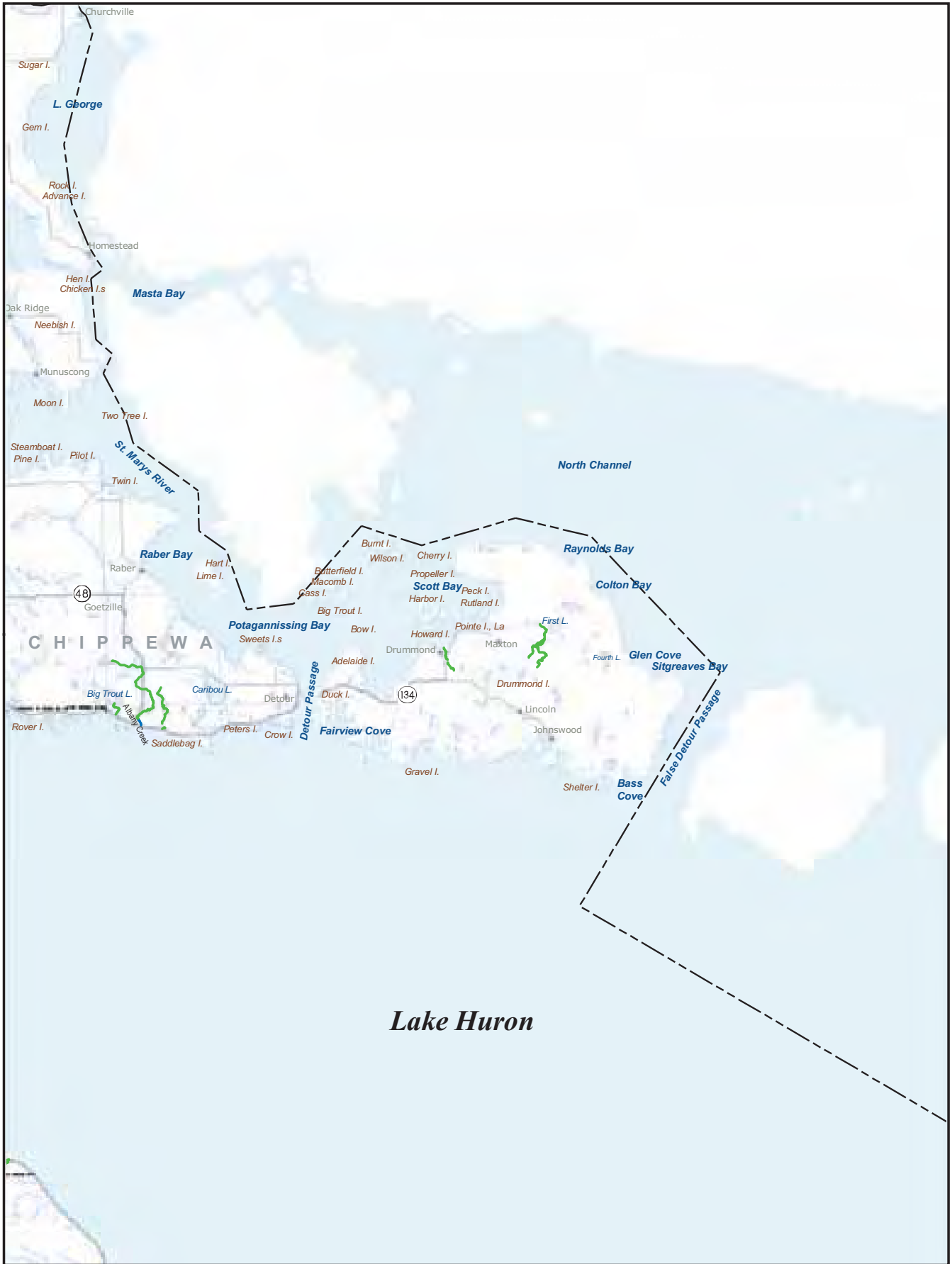
See Page 29

See Page 33



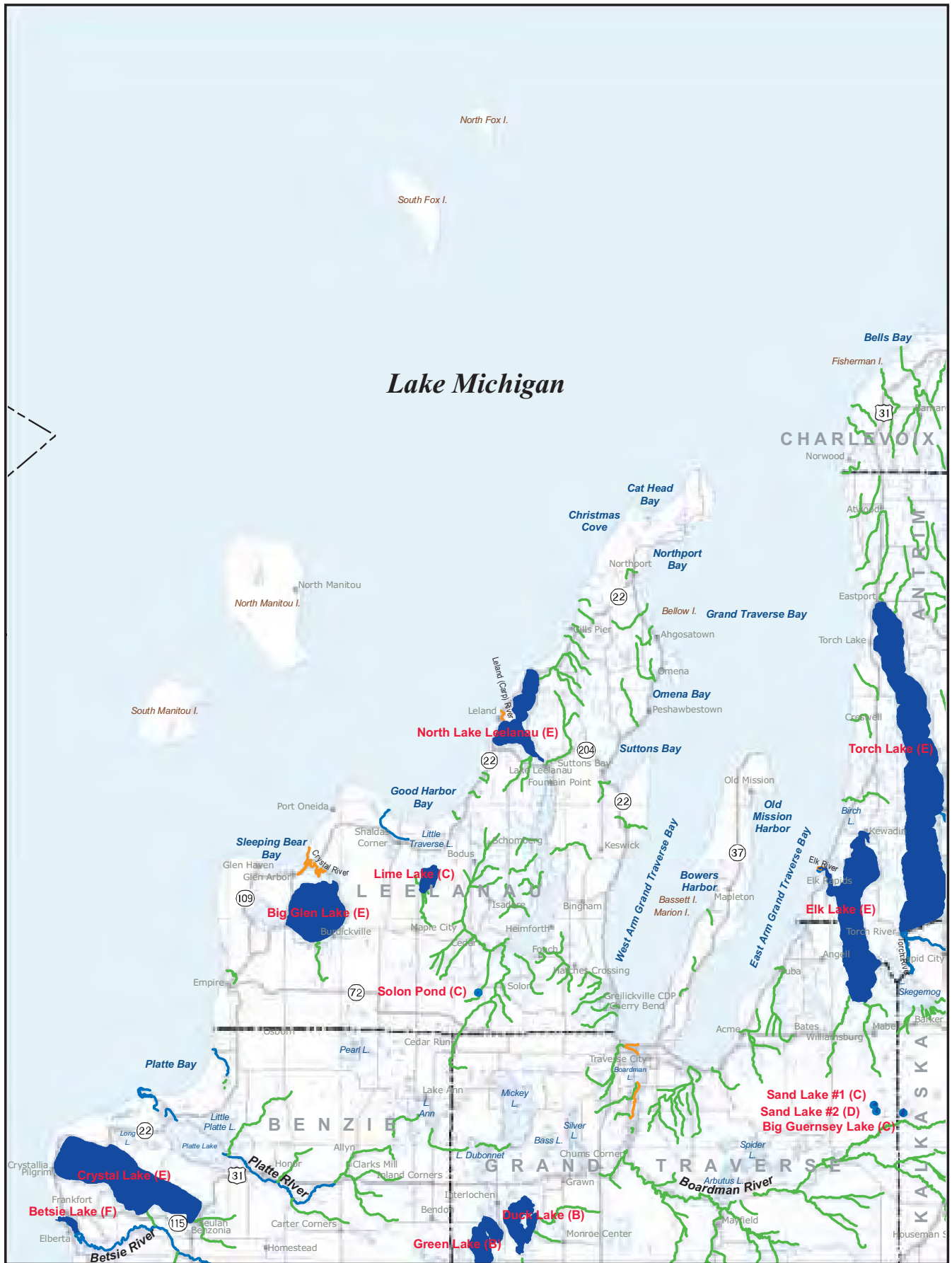
See Page 32

See Page 34



See Page 33

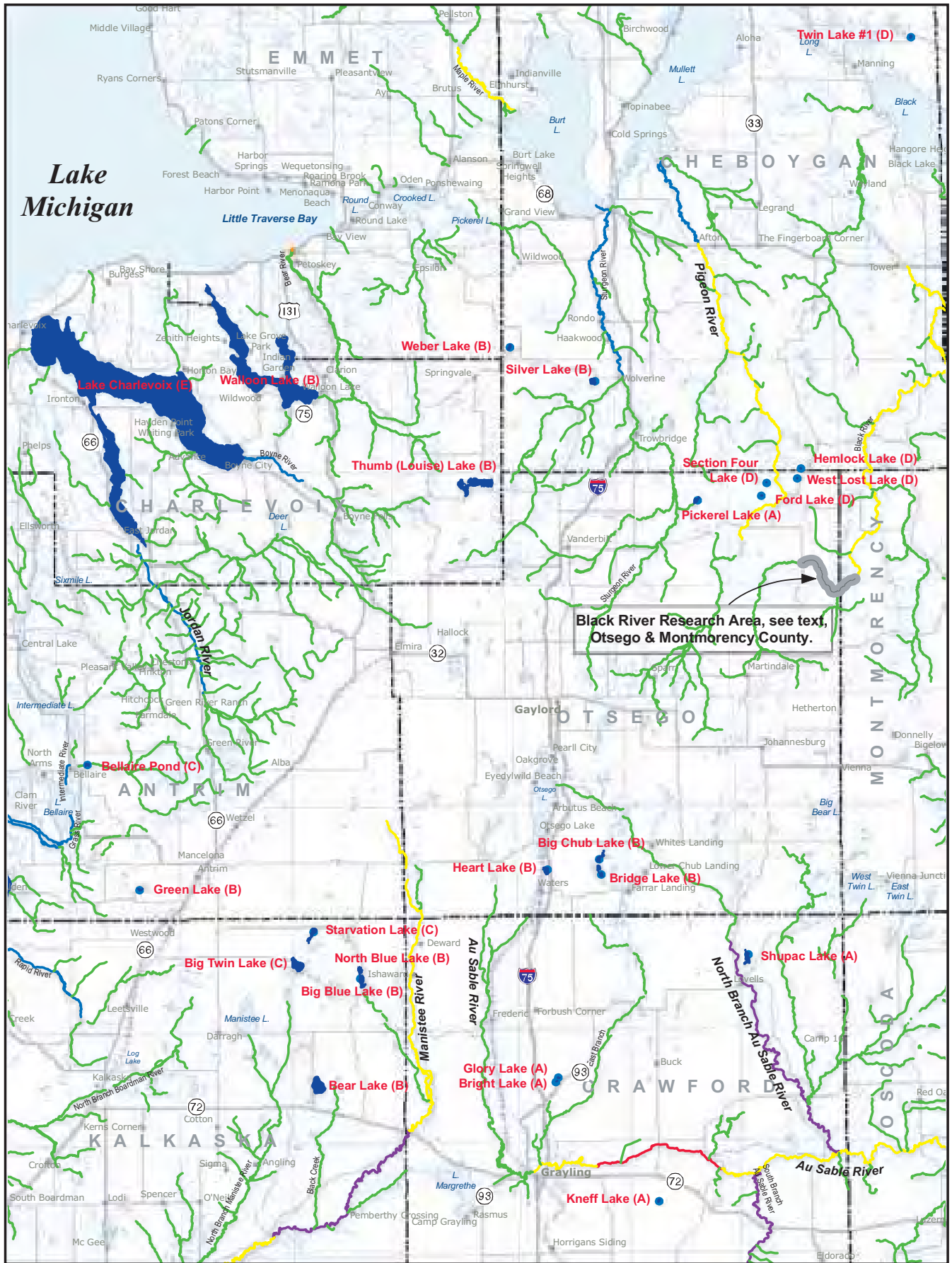
See Page 37



See Page 38

See Page 39

See Page 36

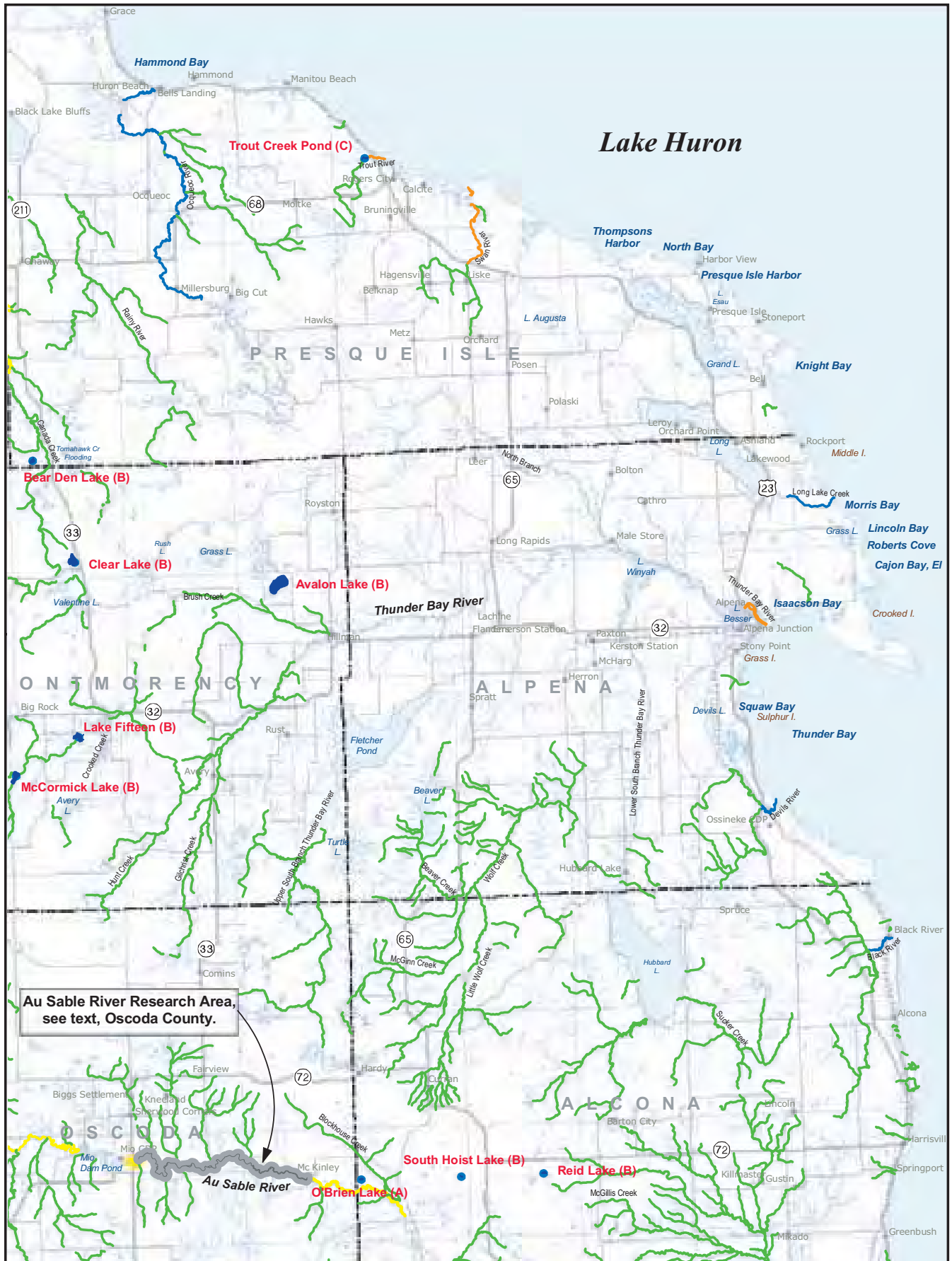


See Page 35

See Page 39

See Page 40

See Page 37

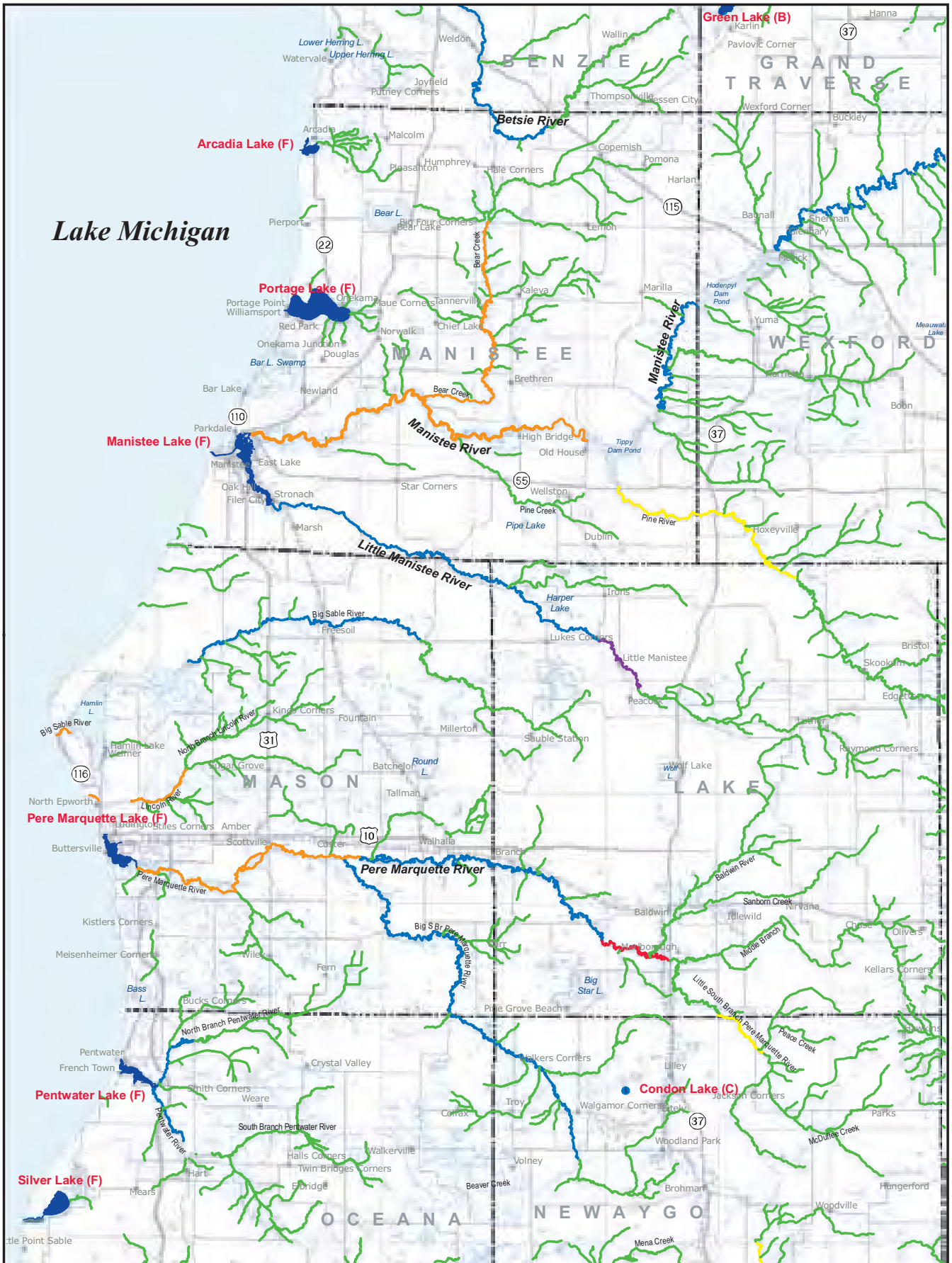


Lake Huron

See Page 36

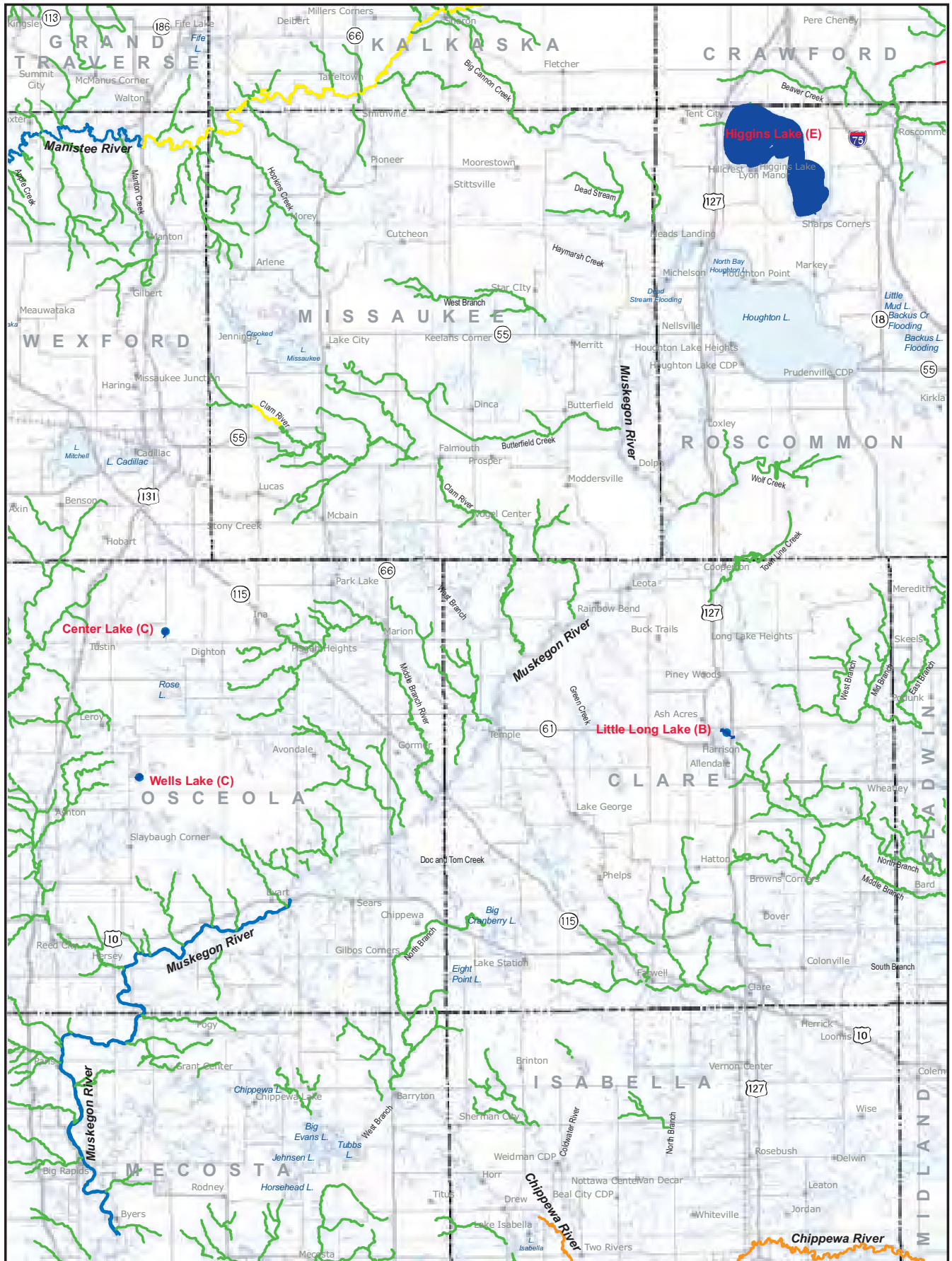
See Page 40

See Page 41



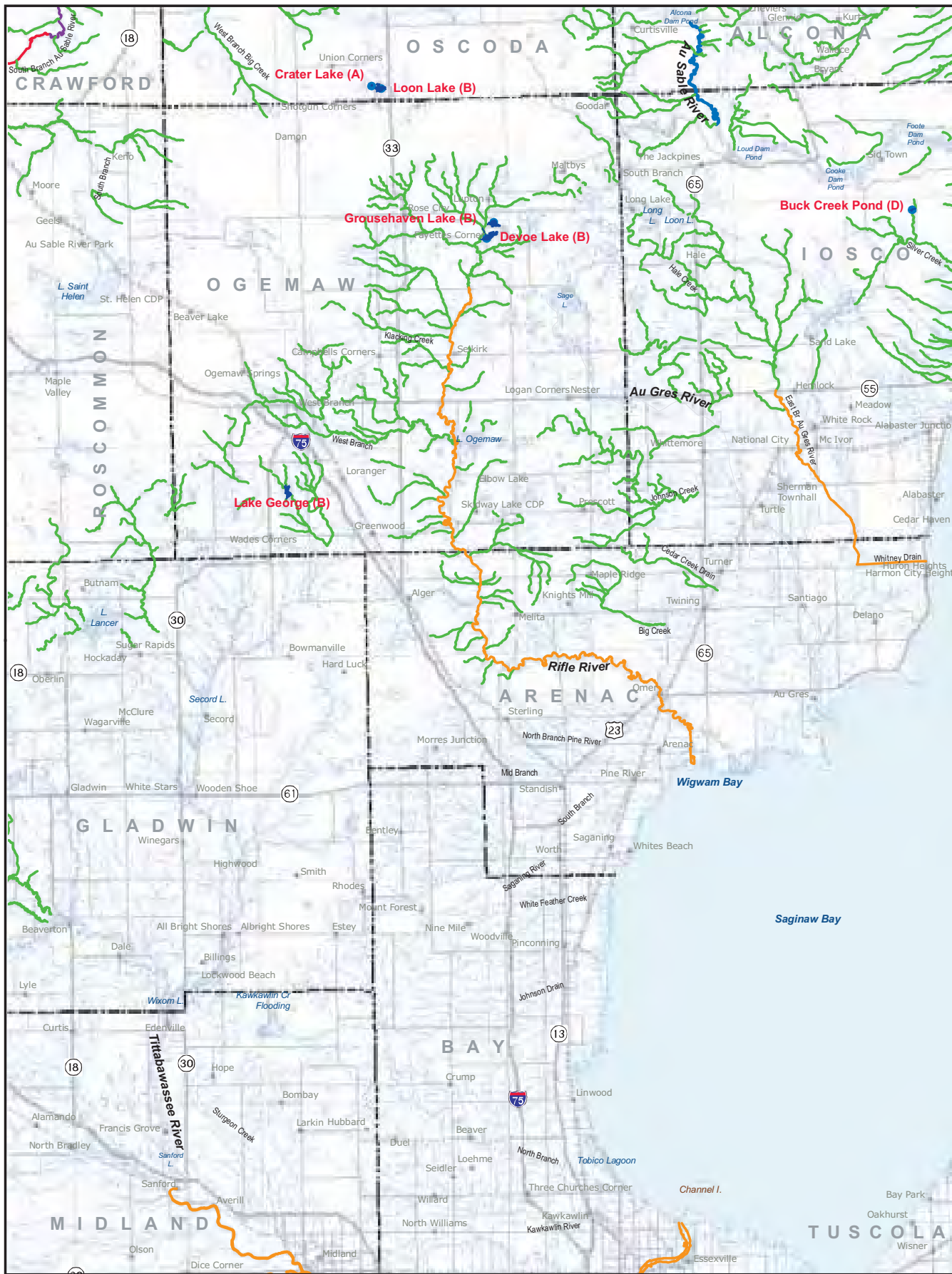
Lake Michigan

See Page 39



See Page 38

See Page 40



See Page 39

See Page 41

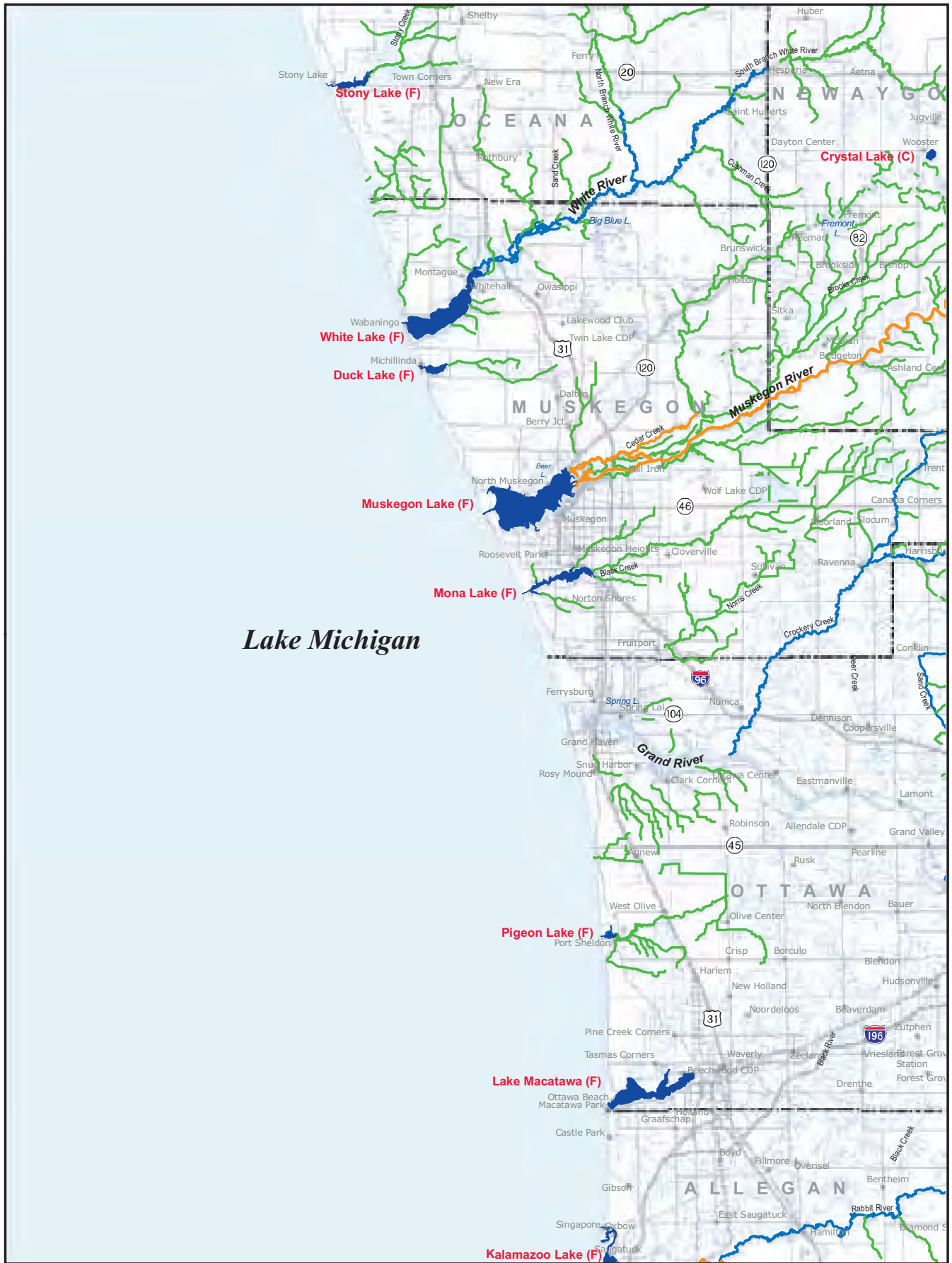
See Page 37



See Page 40

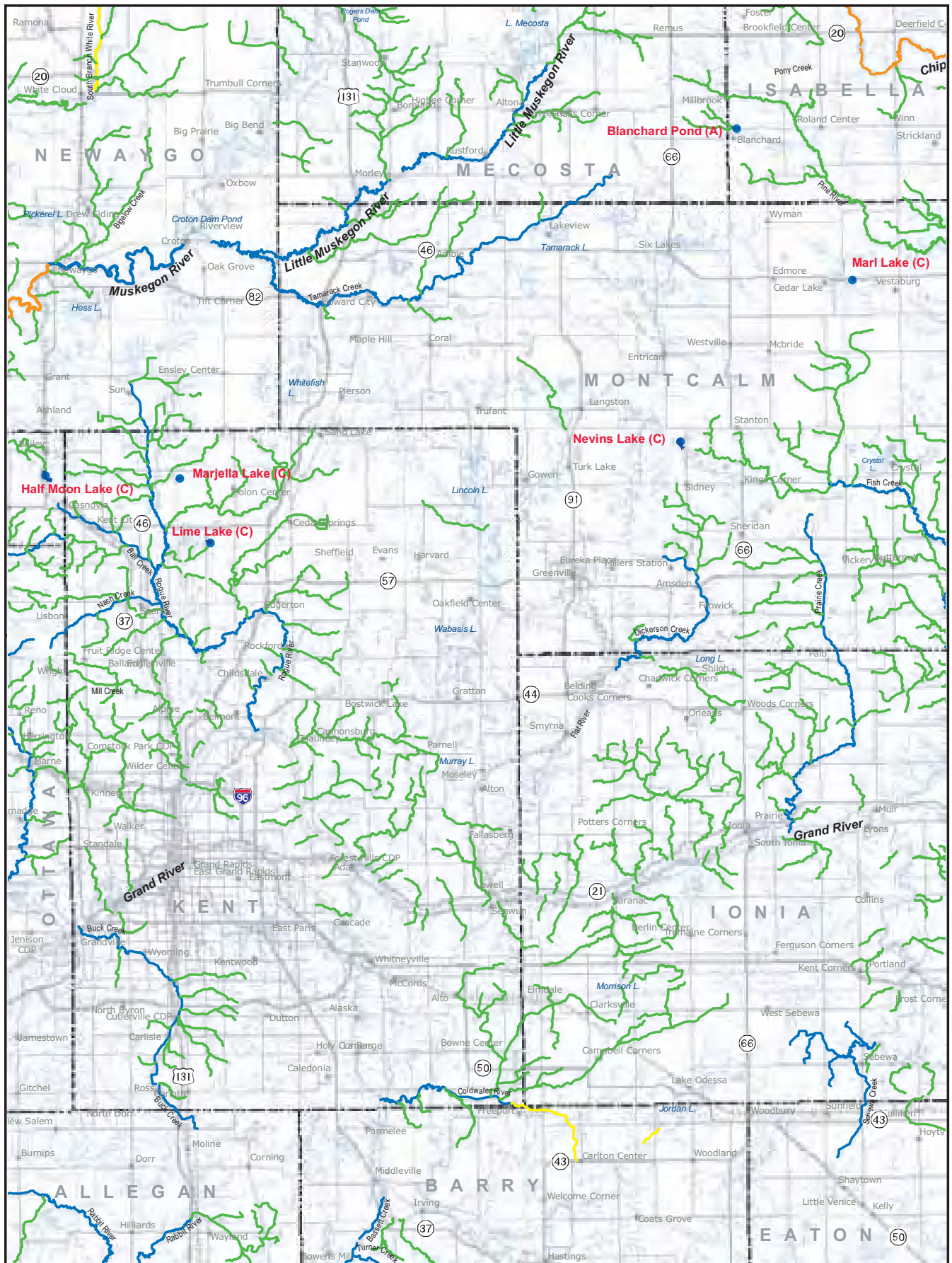
See Page 45

See Page 46



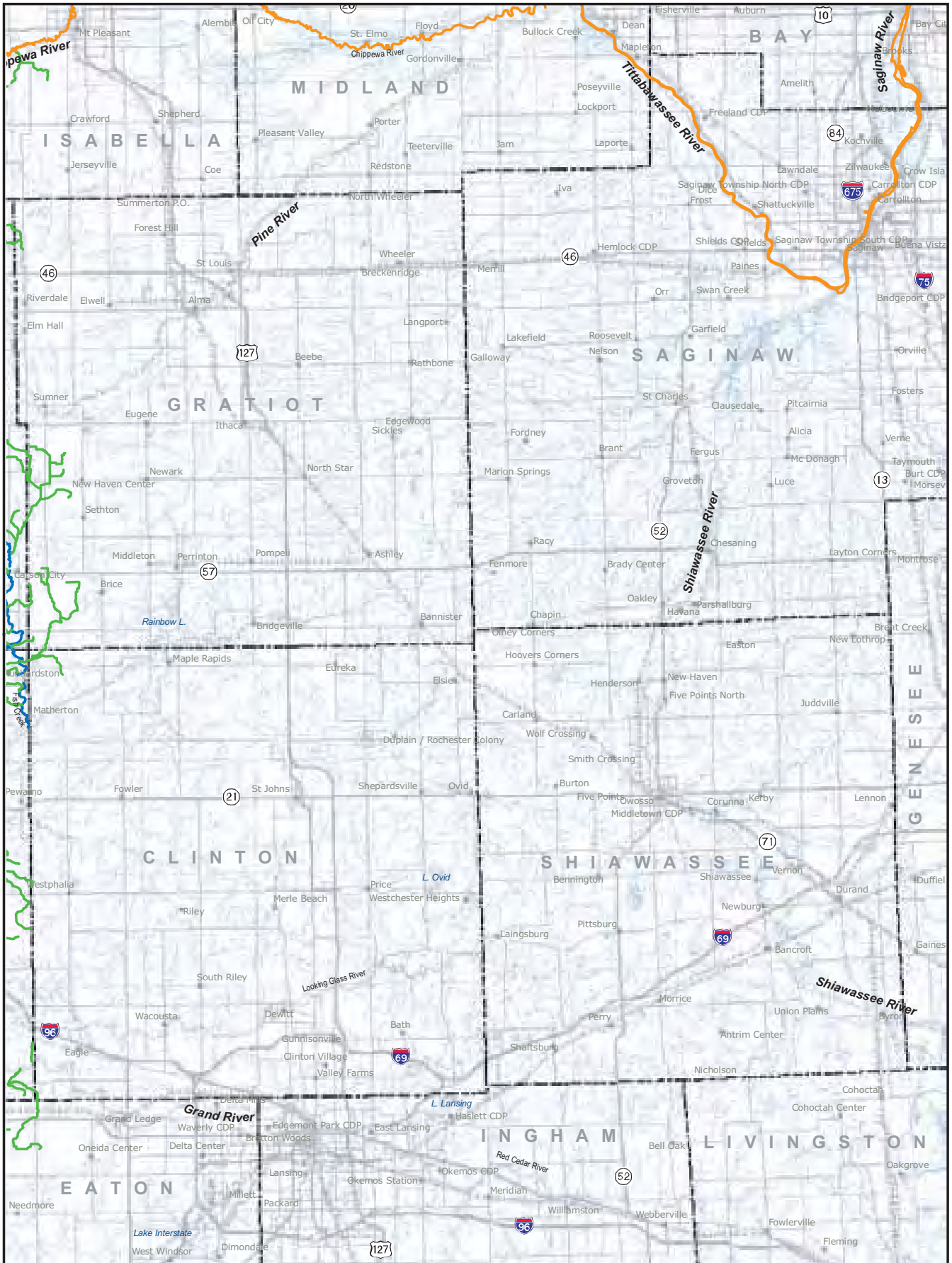
Lake Michigan

See Page 43



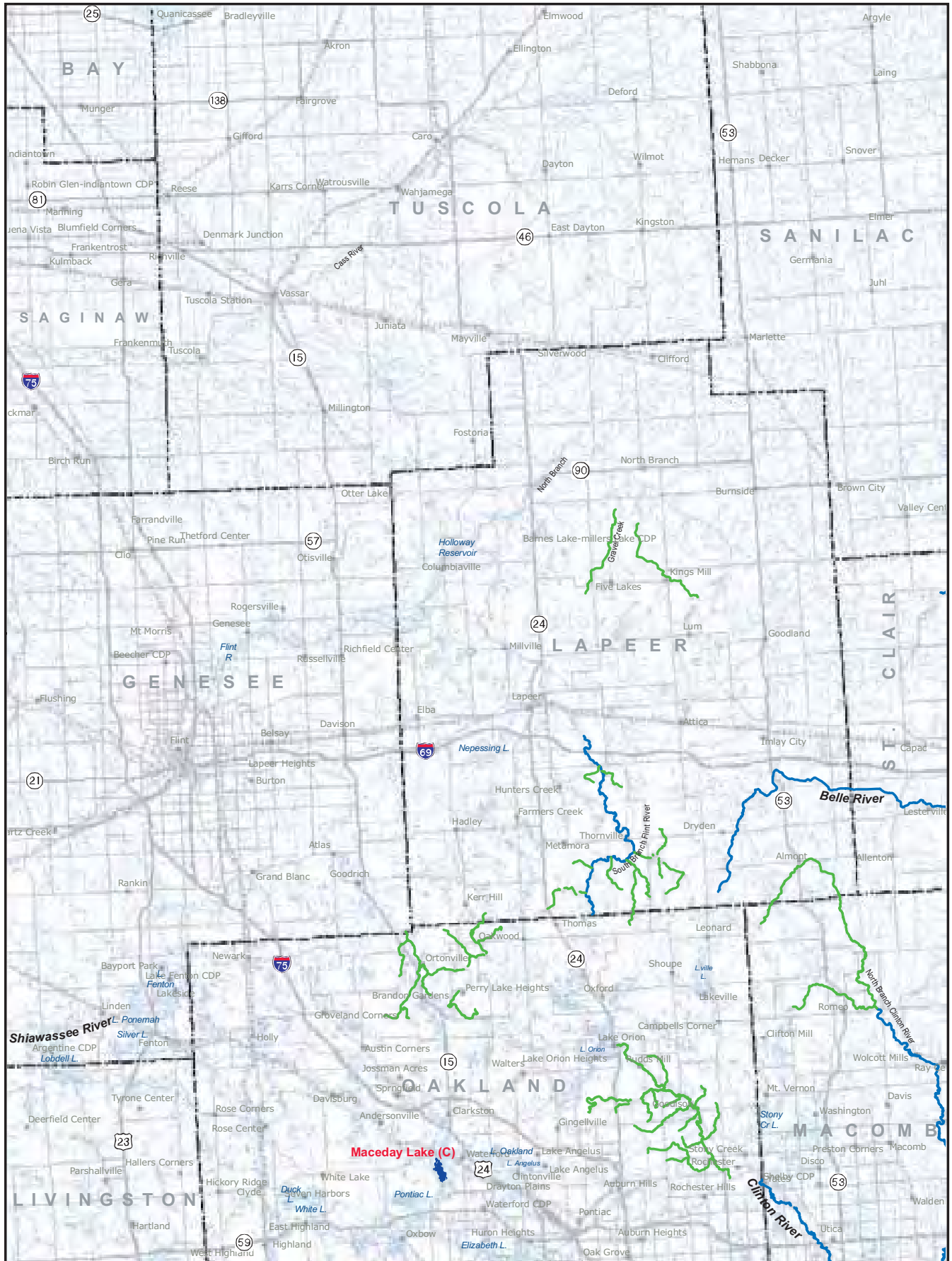
See Page 42

See Page 44



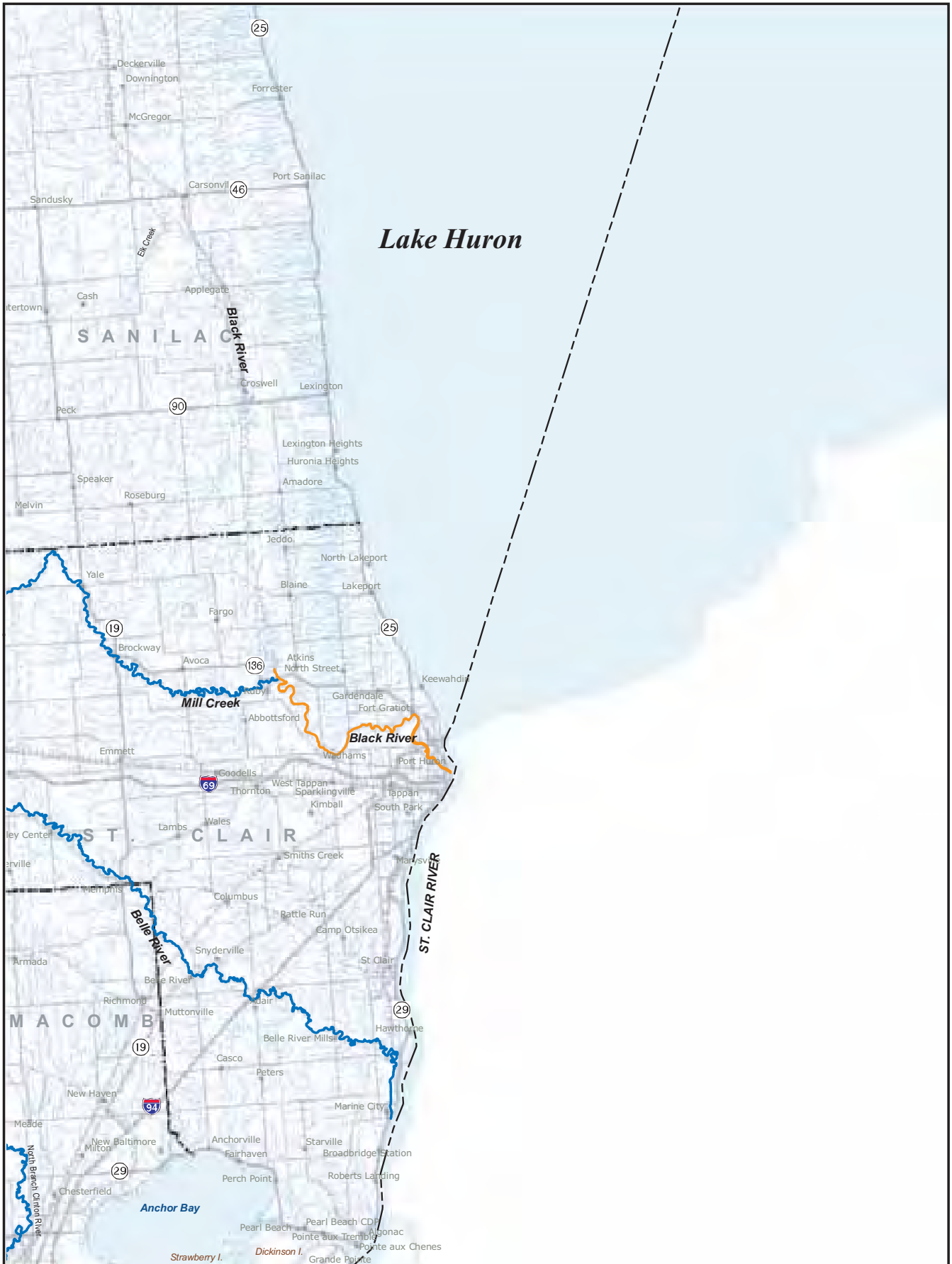
See Page 43

See Page 45



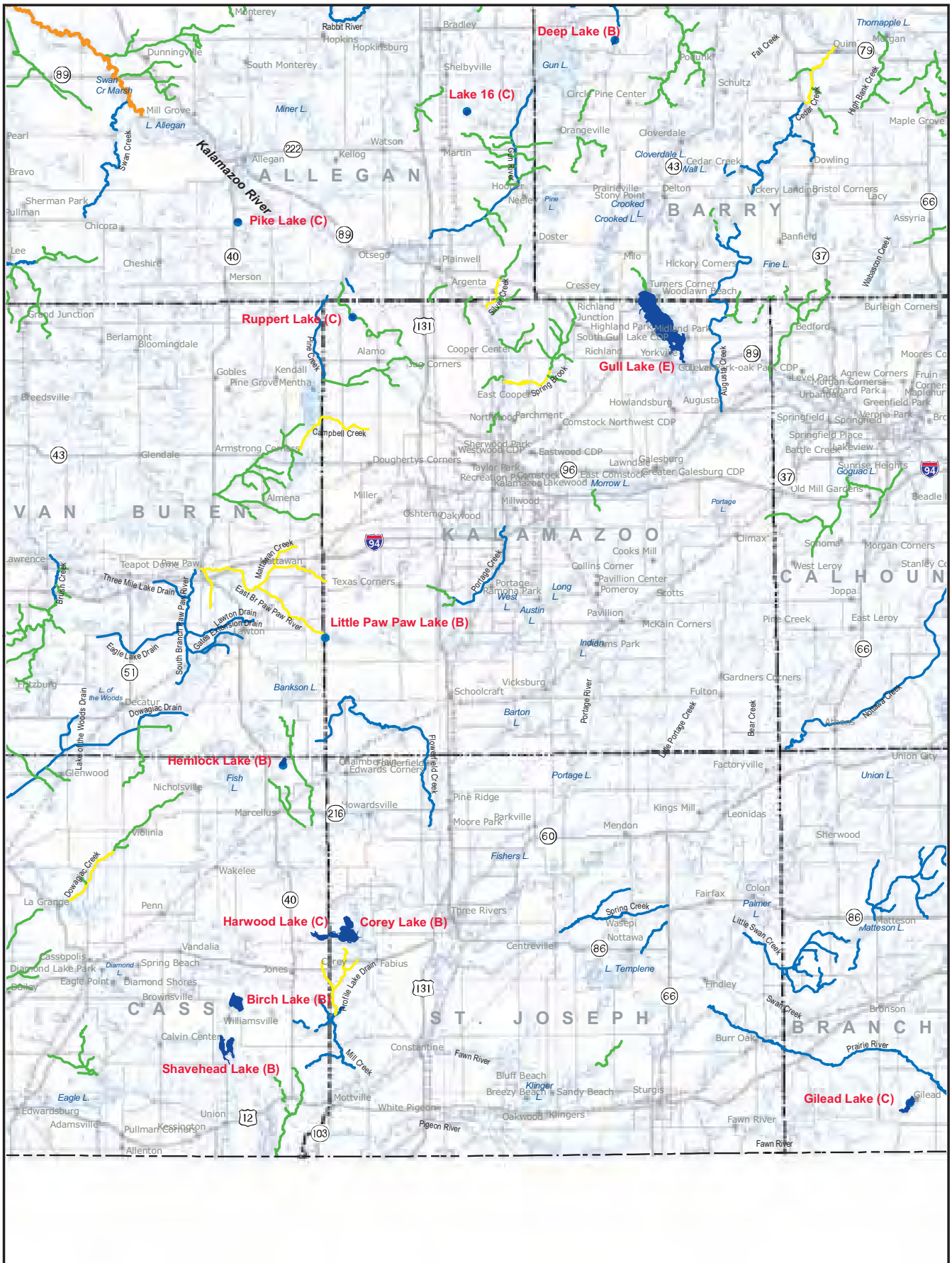
See Page 44

See Page 46





See Page 48



See Page 47

See Page 49



See Page 48

See Page 50



See Page 49

See Page 51



Guarantee!

You'll never fish with another bait!

New lure tripled catch rate in test... won "Best of Show" in Europe, earned Seal of Approval from *North American Fisherman* magazine.

Must double your catch, or you pay nothing!

Swims like a real fish – with its tail.

Member tested and recommended by NORTH AMERICAN FISHERMAN.

Three hundred lures tested.

by Charlie Allen

ORLANDO, FL— A small company in Connecticut has developed a new lure that mimics the motion of a real fish so realistically eight professionals couldn't tell the difference between it and a live shad when it "swam" toward them on retrieval. The design eliminates wobbling, angled swimming and other unnatural motions that problem other hard bait lures. It swims upright and appears to propel itself with its tail.

Curiously, the company may have designed it too well. Tournament fishermen who have used it said it's possible officials will not allow it in contests where live bait is prohibited. They claim it swims more realistically than anything they have ever seen. If so, that would hurt the company's promotional efforts. Winning tournaments is an important part of marketing a new lure.



Inventor Scott Wilson lands a 10-pounder.

Fish would probably prefer to see it restricted. Eight veteran fishermen tested the new lure (called The KickTail® XL-5) on a lake outside Orlando FL for about four hours. Four used the KickTail® XL-5 and four used a combination of their favorite lures and shiners (live bait). The four using the KickTail® XL-5 caught 41 fish versus 14 for the other four. In one boat the KickTail® XL-5 won 19 to 4. The KickTail® XL-5 also caught bigger fish, which suggests it triggers larger, less aggressive fish to strike.

The KickTail® XL-5's magic comes



from a patented technology that breaks the tail into five segments. As water rushes by on retrieval, a little-known principle called aeronautical flutter causes the tail to wag left and right, as if the lure were propelling itself with its tail. Unlike other hard baits, the head remains stationary—only the tail wags. A company spokesman told me this.

Increases catch almost 3 to 1.

"Fish attack live things, and they determine if something is alive by watching its movements. Marine biologists will tell you that the more a lure swims like a real fish, the more fish it will catch. Well, the only live thing the KickTail® XL-5 doesn't do is breathe. It's better than live bait! It lasts longer and it never hangs half-dead from a hook. It's always swimming wild and free. Fish can't stand it. We've seen fish that have just eaten go for the KickTail® XL-5. It's like having another potato chip.

"To make the KickTail® XL-5 even more lifelike, we gave it a natural shad color and shaped it like the most prevalent bait fish of all, the threadfin. Game fish gobble up more threadfin shad

than any other baitfish.

"I tell you, anyone who has fished a day in his life knows this little swimmer is a home run.

"Here, reel it in and watch it swim toward you. Can you tell the difference between it and a live fish? (I said no.) Neither can the fish.

"The flutter technology also allows the KickTail® XL-5 to swim at the water's surface. Other top water lures must be worked to have any live action, or have a bill that makes them dive on retrieval. Our diver version is the only deep crank bait that let's you do tricks like 'walk the dog.' Twitch it at deep levels and it gives an irresistible, lifelike action. Other lures 'dig.' The company says the dying

shad model with a weed guard is the only hard bait of its kind in existence. And there's no need for rattles. The five tail segments click together as you pull it through the water, calling fish from a distance."

Whether you fish for fun or profit, I would recommend you give this lure a try. Three hundred were tested by *North American Fisherman*, magazine readers, and they recommend it. What's more, the distributor guarantees you will double your catch, and will refund the price if you don't (30-day trial limit). To order call or click...

1-800-873-4415
www.ngcsports.com.

(Ask for item # kt), or mail your name, address and a check or M.O. (or cc number and exp. date) to **NGC Sports (Dept. KT-1202)**, 60 Church St., Yalesville CT 06492. S/h is \$7.00 no matter how many you order. CT add sales tax.

Choose Floater, Diver, Dying Shad w/weed guard. \$9.95 each. Must order two or more

Super 10-Pack \$79.95 \$20.00 Savings

Super 10-Pack has all three models in an assortment of colors. The floater is four inches long, the diver five. Works in salt and fresh water. Lure is patented.

THEY DON'T ALL HAVE ANTLERS.



We understand trophies don't all have four legs and 18-inch spreads. That's why we created the Trophy Den. Go to Realtree.com and post some trophies of your own.



TROPHY DEN



The State of Michigan allows appropriate advertising in its annual regulations to eliminate costs of printing. Many states have adopted a similar strategy. Promotional advertising does not constitute endorsement by the Michigan Department of Natural Resources.

EVERY SEASON STARTS AT



FEEL THE RUSH OF THE OUTDOORS

We have all you need for your next fishing trip.



Coupon valid through 8/31/08

TAKE \$10 OFF

any Hunting, Camping and/or Fishing purchase of \$50 or more*



*Limit one coupon per customer. Minimum purchase of \$50 before sales tax. Total amount of coupon must be redeemed in one time. Cannot be combined with any other offers, coupons or Government in each transaction, or used for licenses or previously purchased merchandise. Coupon valid on in-store purchases only. Not redeemable for cash. All items in store except No reproductions or use checks accepted. Excludes ammunition, licenses, kayaks, boots, trolling motors, fish locators, Under Armour and the hard hat. Some additional restrictions may apply. See store for details. ©2008 Dick's Sporting Goods. Scan barcode and take a group discount everywhere. Valid through 8/31/08.

STORE HOURS: Monday-Saturday 9AM-9:30PM, Sunday 10AM-7PM

TO FIND A STORE NEAR YOU
1.866.819.0036 | Dick'sSportingGoods.com

Thank you for purchasing a 2008 Michigan Fishing License

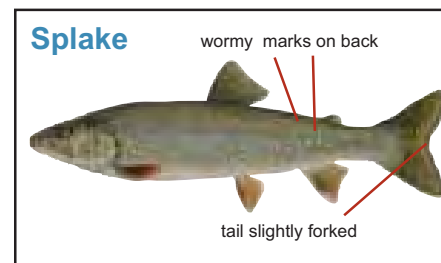
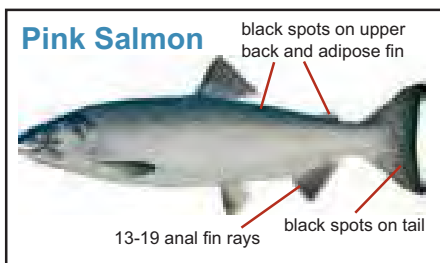
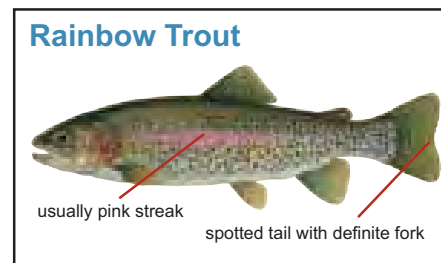
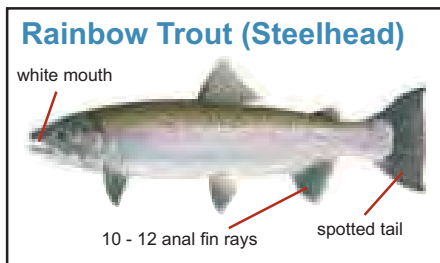
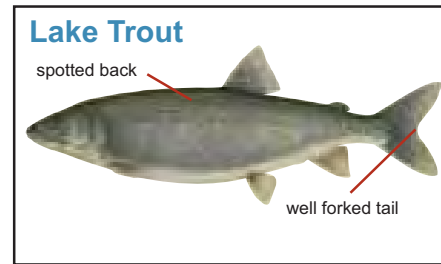
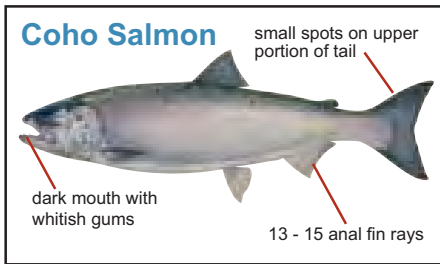
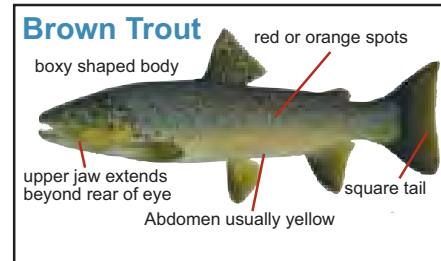
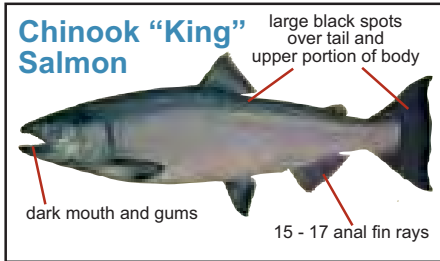
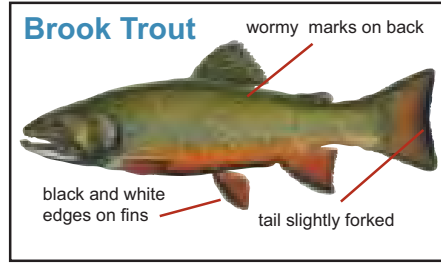
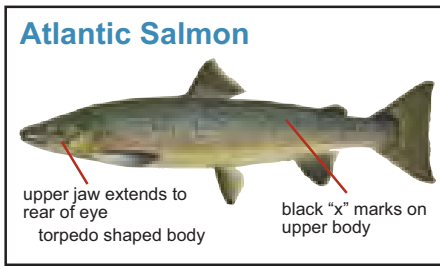
Each year an estimated two million Michigan residents and nonresident tourists fish Michigan waters. Recreational fishing is the largest and highest-valued use of the state's fishery resources. The economic impact of sport fishing is in excess of \$2 billion annually and provides more than 15,000 jobs.

The mission of the DNR Fisheries Division is to protect and enhance fish environments, habitat, populations, and other forms of aquatic life and promote optimum use of these resources for the benefit of the people of Michigan.

Your purchase of a fishing license supports the work of department employees who manage and protect Michigan's abundant aquatic resources. We encourage you to keep fishing and to share your experiences with others. In doing so, you can do your part to keep our state's fishing heritage alive for future generations.

Other sources of information:

Great Lakes Fishery Commission
www.glfsc.org/
 Great Lakes Fishery Trust
www.glft.org
 Great Lakes Sport Fishing Council
www.great-lakes.org
 Great Lakes Council of the Federation of Fly Fishers: www.ffglc.org/
 Michigan Charter Boat Association
www.micharterboats.com
 Michigan Council of Trout Unlimited
www.mctu.org/
 Michigan Fishweb
www.fishweb.com
 Michigan Steelhead and Salmon Fishermen's Association
www.mssfafa.com
 Michigan Sea Grant
www.miseagrant.org
 Recreational Boat and Fishing Foundation: www.rbff.org



The Michigan Department of Natural Resources provides equal opportunities for employment and access to Michigan's natural resources. Both state and federal laws prohibit discrimination on the basis of race, color, national origin, religion, disability, age, sex, height, weight or marital status under the Civil Rights Acts of 1964 as amended (MI PA 453 and MI PA 220, Title V of the Rehabilitation Act of 1973 as amended, and the Americans with Disabilities Act). If you believe that you have been discriminated against in any program, activity, or facility, or if you desire additional information, please write: Human Resources, Michigan Department of Natural Resources, P.O. Box 30028, Lansing, MI 48909-7528 or the Michigan Department of Civil Rights, Cadillac Place, Suite 3-600, 3054 W. Grand Blvd., Detroit, MI 48202 or the Division of Federal Assistance, U.S. Fish and Wildlife Service, 4401 North Fairfax Drive, Mail Stop MBSP-4020, Arlington, VA 22203. This publication is available in alternative formats upon request.



www.XONtv.TV
OUTDOOR TV... YOUR WAY

XONtv is an Exciting, New Internet-Based Outdoor Television Network Giving Sportsmen & Women the most User-Friendly, High Quality Programming Possible. And, it's available All Day-Every Day!



ON DEMAND WHEN IT'S CONVENIENT FOR YOU!

www.XONtv.TV